

Notice is hereby given that a Meeting of the Policy Review Committee will be held on:

**Date:** Wednesday, 18 May 2016  
**Time:** 10.30am  
**Meeting Room:** Council Chambers  
**Venue:** 15 Forth Street  
Invercargill

---

## Policy Review Committee Agenda

### OPEN

---

#### MEMBERSHIP

<b>Chairperson</b>	Rodney Dobson Mayor Gary Tong
<b>Councillors</b>	Lyall Bailey Stuart Baird Brian Dillon John Douglas Paul Duffy Bruce Ford George Harpur Julie Keast Ebel Kremer Gavin Macpherson Neil Paterson

#### IN ATTENDANCE

<b>Chief Executive</b>	Steve Ruru
<b>Committee Advisor</b>	Fiona Dunlop

Contact Telephone: 0800 732 732  
Postal Address: PO Box 903, Invercargill 9840  
Email: [emailsdc@southlanddc.govt.nz](mailto:emailsdc@southlanddc.govt.nz)  
Website: [www.southlanddc.govt.nz](http://www.southlanddc.govt.nz)

**Full agendas are available on Council's Website**  
**[www.southlanddc.govt.nz](http://www.southlanddc.govt.nz)**

## **Terms of Reference for Policy Review Committee**

This committee is a committee of Southland District Council and has responsibility to:

- Review Council policies on a regular basis as to their relevancy and appropriateness.
  - Recommend new policies or changes to existing policies as required.
  - Ascertain the impact of proposed Government legislation on Council policies or activities and make responses/submissions on regional matters, SOEs, etc.
  - Review Asset Management Plans (including the renewal policy) for Council's infrastructural assets such as roading, water and sewage schemes and other Council property.
-

---

TABLE OF CONTENTS

ITEM	PAGE
<b>PROCEDURAL</b>	
1 Apologies	5
2 Leave of absence	5
3 Conflict of Interest	5
4 Public Forum	5
5 Extraordinary/Urgent Items	5
6 Confirmation of Minutes	5
<b>REPORTS</b>	
7.1 Venture Southland Community Development Update	13
7.2 Venture Southland Projects and Activities Report February - March 2016	25
7.3 Tourism Trends and Issues	43
7.4 Draft Reserves Management Policy	55
7.5 Community Futures Project update	71



---

**1 Apologies**

At the close of the agenda no apologies had been received.

**2 Leave of absence**

At the close of the agenda no requests for leave of absence had been received.

**3 Conflict of Interest**

Committee Members are reminded of the need to be vigilant to stand aside from decision-making when a conflict arises between their role as a member and any private or other external interest they might have.

**4 Public Forum**

Notification to speak is required by 5pm at least two days before the meeting. Further information is available on [www.southlanddc.govt.nz](http://www.southlanddc.govt.nz) or phoning 0800 732 732.

**5 Extraordinary/Urgent Items**

To consider, and if thought fit, to pass a resolution to permit the committee to consider any further items which do not appear on the Agenda of this meeting and/or the meeting to be held with the public excluded.

Such resolution is required to be made pursuant to Section 46A(7) of the Local Government Official Information and Meetings Act 1987, and the Chairperson must advise:

- (i) the reason why the item was not on the Agenda, and
- (ii) the reason why the discussion of this item cannot be delayed until a subsequent meeting.

Section 46A(7A) of the Local Government Official Information and Meetings Act 1987 (as amended) states:

“Where an item is not on the agenda for a meeting,-

- (a) that item may be discussed at that meeting if-
  - (i) that item is a minor matter relating to the general business of the local authority; and
  - (ii) the presiding member explains at the beginning of the meeting, at a time when it is open to the public, that the item will be discussed at the meeting; but
- (b) no resolution, decision or recommendation may be made in respect of that item except to refer that item to a subsequent meeting of the local authority for further discussion.”

**6 Confirmation of Minutes**

6.1 Meeting minutes of Policy Review Committee meeting of 9 March 2016

---

## Policy Review Committee

### OPEN MINUTES

---

---

Minutes of a meeting of Policy Review Committee held in the Council Chambers, 15 Forth Street, Invercargill on Wednesday, 9 March 2016 at 9.02am.

---

#### **PRESENT**

<b>Chairperson</b>	Rodney Dobson Mayor Gary Tong
<b>Councillors</b>	Lyall Bailey Stuart Baird Brian Dillon John Douglas Paul Duffy Bruce Ford George Harpur Julie Keast Ebel Kremer Gavin Macpherson Neil Paterson

#### **IN ATTENDANCE**

Chief Executive Steve Ruru, GM Community and Futures Rex Capil, Communications Manager Louise Pagan, Team Leader Governance Chris Dolan and Committee Advisor Fiona Dunlop.

**1 Apologies**

There were no apologies.

**2 Leave of absence**

There were no requests for leave.

**3 Conflict of Interest**

There were no conflicts of interest declared.

**4 Public Forum**

There was no public forum.

**5 Extraordinary/Urgent Items**

There were no Extraordinary/Urgent items.

**6 Confirmation of Minutes**

**Resolution**

Moved Cr Keast, seconded Cr Bailey **and resolved:**

**That the Policy Review Committee confirms the minutes of Policy Review Committee, held on 18 November 2015 as a true and correct record of that meeting.**

**Reports**

**7.1 Venture Southland Projects and Activities Report September - October 2015**

**Record No: R/15/11/20747**

Paul Casson Chief Executive of Venture Southland was in attendance for this item.

**Resolution**

Moved Cr Paterson, seconded Cr Dillon **and resolved:**

**That the Policy Review Committee:**

- a) Receives the report titled “Venture Southland Projects and Activities Report September - October 2015” dated 22 February 2016.**

**7.2 Venture Southland Project and Activities Report November and December 2015 and January 2016**

**Record No: R/16/2/2423**

Paul Casson Chief Executive of Venture Southland was in attendance for this item.

Mr Casson advised that the purpose of the report was to update the Council on Venture Southland projects and activities for November and December 2015 and January 2016.

Council noted that there were many projects and activities covered in the report.

Mr Casson highlighted the progress with the work at the Awarua Satellite Ground Station. Venture Southland had project managed the installation of Spire-Global's new satellite ground station at Lochiel. This was commissioned on 11 December 2015. An arrangement with existing satellite operators that will allow for fibre-optic connectivity to the Awarua Satellite Ground Station was negotiated by Venture Southland.

Mr Casson also advised that the Aeromagnetic Survey of Southland began in Southland and Otago in January 2016. The data gathered will be available free to industry and investors. The survey is to continue over the 2016/2016 summer and expected to end in March 2017. To date a fixed wing aircraft has surveyed 4,536 km, which is 6% of the total survey area of Southland Region.

Council noted that Venture Southland has been successful in being awarded the Regional Business Partner Programme. This programme was retendered in mid-2015, with Venture Southland being notified of the appointment in late 2015. The new contract began in January 2016 with the migration of the Business Mentors programme into the formal Regional Business Partner Programme.

Also noted was that the successful bid allows Venture Southland to continue the partnership with New Zealand Trade and Enterprise and Callaghan Innovation to ensure local businesses are able to access support services including research and development, and innovation support, management training, business mentor and business referral and support services. To date, Venture Southland has seen a significant increase in uptake of services in 2016. Venture Southland will continue to work with New Zealand Trade and Enterprise to ensure the available funding matches demand as closely as possible.

Mr Casson further advised that the Southland Dairy Lean programme has been formally recognised and endorsed by DairyNZ. It will be progressively rolled out throughout New Zealand and will be rebranded as the 'Farm Tune' Programme. Southland delivery of Farm Tune began in mid-January 2016, with 12 farms as part of the programme. Feedback on the initial sessions has been very positive. The formal training programme will continue until the end of April, with follow-up and on-farm session continuing throughout the year.

### **Resolution**

Moved Cr Harpur, seconded Cr Dillon **and resolved:**

**That the Policy Review Committee:**

- a) **Receives the report titled "Venture Southland Project and Activities Report November and December 2015 and January 2016" dated 19 February 2016.**

## **7.3 2016 Southland District Council Holiday Programme Report**

**Record No: R/16/1/1257**

Paul Casson, Chief Executive of Venture Southland and Sally Hayes, Invercargill Licensing Trust Kidzone Trust Festival Director were in attendance for this item.



Miss Hayes advised that the report provided an evaluation of the 2016 Southland District Council Holiday Programme and identified areas to consider for the 2017 programme.

The Committee noted that the programme attendance numbers far exceeded those in any other year that the programme has been delivered. Feedback on programme was that it continues to be very popular with families in the district with 50% of them having never attended one before.

Miss Hayes also advised that going forward the programme will aim to maintain and in some areas grow attendance numbers and that feedback, both positive and constructive will continue to be sought for this programme with the aim to continue delivering a programme that is best suited to the communities that use it.

The Committee also noted that online registration was available this. Parents advised that it was convenient rather than wait for an Area Office to be open to register.

Miss Hayes commented that for the delivery of the 2017 Holiday Programme that a few more resources on the team to assist with the delivery and a uniform specific to the programme would be helpful.

#### **Resolution**

Moved Cr Bailey, seconded Cr Keast **and resolved:**

**That the Policy Review Committee:**

- a) **Receives the report titled “2016 Southland District Council Holiday Programme Report” dated 26 February 2016.**

#### **7.4 Draft Use of Unmanned Aerial Vehicles Policy**

**Record No: R/16/1/739**

Tamara Dytor, Policy Analyst was in attendance for this item.

Ms Dytor advised that the report presents a draft of the Unmanned Aerial Vehicles (UAVs) Policy to allow the Southland District Council to determine its approach to the use of UAVs, such as drones above Council owned or controlled land or property.

She also advised that under new rules introduced by the Civil Aviation Authority (CAA), Council can grant or decline consent for the use of UAVs on or above property that it owns or controls. This report seeks guidance from the Policy Review Committee regarding the management and regulation of UAVs in Southland District.

The Committee were advised of an addition to the policy that would include the reporting of near misses with unmanned aerial vehicles.

#### **Resolution**

Moved Cr Kremer, seconded Cr Macpherson **recommendations a – c, d with an addition (as indicated) and e:**

**That the Policy Review Committee:**

- a) **Receives the report titled “Draft Use of Unmanned Aerial Vehicles**

Policy” dated 26 February 2016.

- b) Determines that this matter or decision be recognised as not significant in terms of Section 76 of the Local Government Act 2002.
- c) Determines that it has complied with the decision-making provisions of the Local Government Act 2002 to the extent necessary in relation to this decision; and in accordance with Section 79 of the Act determines that it does not require further information, further assessment of options or further analysis of costs and benefits or advantages and disadvantages prior to making a decision on this matter.
- d) Endorses this policy for consultation with Community Boards and Community Development Area Subcommittees on prohibited locations in local areas with the delegation to the Chief Executive Officer to include conditions for reporting of near misses with Unmanned Aerial Vehicles.
- e) Recommends the draft policy for consideration by Council following feedback from Community Boards and Community Development Area Subcommittees.

## 7.5 Community Futures Project

Record No: R/15/12/22429

Tamara Dytor, Policy Analyst was in attendance for this item.

Ms Dytor advised that the report provides the Policy Review Committee with an update on the Community Futures Project as well as recent and upcoming engagements with community stakeholders.

The Committee noted that the Community Futures Project was developed to inform elected members about the impacts of demographic change on communities and to date, the Project has focused on demographic projections for Ohai and Nightcaps. The Project focuses on the implications of projected demographic change for Ohai and Nightcaps, both of which are likely to decline in population over the next 30 years. Demographic change has implications across a range of Council activities. Changes in demographics will impact on the demand for services, township viability and vibrancy, rates affordability and funding equity.

The Committee also noted that there was a workshop for elected members and staff were held on 18 and 19 November 2015, with presentations by demographers Dr Natalie Jackson, Rachael McMillan and Dr Peter Matanle. A forum for community stakeholders was held in the Southland District Council Otautau office on 24 February 2016 and a further forum for all residents is scheduled for 10 March 2016 in the Nightcaps Community Hall.

Ms Dytor further advised that Officers will continue with community engagement and use feedback and research to identify key issues and priorities. These will be communicated to Elected members, who may wish to direct Officers to develop potential options for infrastructure, services and projects. An analysis of options will be used inform the content of Asset Management Plans and the Long Term Plan 2018-2028.

**Resolution**

Moved Cr Baird, seconded Cr Harpur **and resolved:**

**That the Policy Review Committee:**

- a) **Receives the report titled “Community Futures Project” dated 2 March 2016.**

The meeting concluded at 10.01am.

CONFIRMED AS A TRUE AND CORRECT  
RECORD AT A MEETING OF THE POLICY  
REVIEW COMMITTEE HELD ON WEDNESDAY  
9 MARCH 2016.

**DATE:**.....

**CHAIRPERSON:**.....



## Venture Southland Community Development Update

**Record No:** R/16/4/6220

**Author:** Nicola Wills, Community Development Team Leader

**Approved by:** Rex Capil, Group Manager Community and Futures

☐ Decision

☐ Recommendation

☒ Information

### Introduction

- 1 Please find attached the Venture Southland Community Development Update, which is focused on the Waiau Aparima area.
- 2 A highlight for the team has been the improved state of War Memorials across the region during recent ANZAC day commemorations. This has been due to recent restoration work completed to a number of memorials, facilitated by Venture Southland.
- 3 The Community Development team have had a busy last quarter and we are looking forward to working on a number of future projects with the SDC Community and Futures team and other SDC staff.

### Recommendation

**That the Policy Review Committee:**

- a) **Receives the report titled “Venture Southland Community Development Update” dated 9 May 2016.**

### Attachments

- A Venture Southland Community Development Update [View](#)

# Community Development Update 18 May 2016

---

**Nicola Wills**

Community Development Team Leader

**Kathryn Cowie**

Community Development Planner

1. Community Development Team – Staff Update
2. Regional Strategies and Initiatives
3. Local Initiatives – Waiau Aparima Ward

## Community Development Team: Staff Update



Introducing **Nicola Wills**, Team Leader  
*Stewart Island/Rakiura*

**Tina Harvey, Planner**

*Waihopai/ToeToes and Winton*

**Steven Watson, Planner**

*Mararoa/Waimea*

**Kathryn Cowie, Planner**

*Waiau/Aparima and Wallacetown*

**Diana Zadravec, Planner**

*Tuatapere, Te Anau and Manapouri*

**Suzanne McKenzie, Administration Assistant**

## Item 7.1 Attachment A

## Regional Strategies and Initiatives: Update

- War Memorial Upgrades
- Curio Bay Tuma Toka Vision
- Community Workers in Southland Report
- Southland Cycling Strategy
- Rural Pool Heating
- Wyndham Service Provision Review
- Volunteer Futures Project (CONA)



*Riverton War Memorial, ANZAC Day 2016*



# Local Initiatives: Otautau

## Otautau St Johns

- Assisted group with funding applications for their new health shuttle.
- This is a vital service transporting people from Otautau and the wider Western Southland area to their medical appointments. Without it many would not have the means to attend.
- All funds (approx. \$45,000) have now been secured, they will purchase their new shuttle this year.

### Fundraising efforts mean new shuttle on way

**BY ALLISON BECKHAM**

AFTER only eight months of fundraising, the Otautau St John committee has raised enough money to buy a new community health shuttle.

Reaching the target of \$40,000 meant the committee was now able to look for a suitable van, chairman Peter Ayson said.

Among several grants was one of \$14,000 from the Ohai Railway Fund — set up after the Ohai Railway Board assets were sold to

New Zealand Rail in 1992 — with the rest of the money coming from community fundraising and donations, he said.

“The response to the fundraising has been phenomenal. It’s been really overwhelming...”

“We appreciate the support we have received, and likewise the public appreciate the service we offer.”

The health shuttle transports people from across Western Southland to medical-related

appointments in Invercargill. Before the introduction of the Invercargill-Dunedin health shuttle in 2013, it also travelled to Dunedin occasionally, Mr Ayson said.

The current van had been used

since the service began almost six years ago and had travelled about 170,000km, he said. In the 2014-15 financial year to the end of June it carried 156 patients.

“It’s time for an update. It’s time to give the patients a more comfortable ride.”

It was hoped to have the new van on the road in July, he said.

An open day would be held then to enable people to look through the St John ambulance station and the health shuttle.

“The response to the fundraising has been phenomenal.”

Source, Southland Express Thursday 21 April 2016

## Local Initiatives: Otautau

### Otautau Community Pool

- A report investigating various options to heat the pool has been completed by Ahika Consulting (facilitated by Venture Southland).
- Pool committee have now established their preferred heating upgrade option which is solar and heat pump option.
- Venture Southland working with the committee on funding planning and options (\$120-\$200k project).

### Otautau Three Churches Flower & Quilt Walk

- Popular annual event held at the end of February
- Assisted with planning, flyers, posters
- Attendance up by approx. 70 people from last year

### Otautau Community Board

- Assisted with funding applications for BMX Track and also for restoration work for Isla Bank War memorial.

# Local Initiatives: Otautau

## Otautau RSA

- Assisted with funding application for a information/photo panel at the second gun shelter at the Otautau war memorial.
- The first gun shelter is dedicated to WW1 soldiers, while the second will be dedicated to those who served in WW2



## Otautau New Life Church

- Early stages, but a potential major capital works project for Otautau.
- Have assisted with funding advice and planning and will assist with applications as the project progresses.

## Otautau Promotions

- Assisted with funding application for new welcome signs at each end of the town.

## Local Initiatives: Riverton

### Kohi Kohi's Cottage

- This restoration project is now in its second stage, and funding is being sought by Venture Southland on behalf of the Southland Heritage & Building Preservation Trust to complete this. Stage 1 has successfully been completed which totalled approximately \$102,000. This amount was fully funded by external funders (Community Trust of Southland, Lottery, Guardian Trust, SRHF, SDC Community Initiatives).
- Community Trust of Southland have granted \$10,000 towards stage 2 of the project (total cost \$45k). Further funding applications currently with Lottery Environment & Heritage, SRHF and SDC Community Initiatives Fund.





# Local Initiatives: Riverton

## Riverton Community Board

- Venture Southland has assisted the Board to date with the process of demolishing the soundshell, facilitating the community survey which identified public opinion.
- Now playing a role to assist with funding applications for the subsequent beautification project of Taramea Bay

*Article on front page Southland Times,  
18 April 2016*



## Te Hikoi

- Assisting (along with Southland Community Law Centre) with updating trust deed, governance, policies and procedures.
- Important to ensure efficient governance and leadership

## Local Initiatives: Thornbury & Colac Bay

### Thornbury Vintage Tractor & Implement Club

- Assisting with funding and planning for various projects (new display, new building, new acquisition)



Thornbury Vintage Tractor & Implement Club

### Colac Bay Progress League

- Assisted with funding application for new kitchen equipment for the hall.

# Local Initiatives: Ohai & Nightcaps

---

## Community Futures Forum

- Venture Southland facilitated Natalie Jackson's visit and population research and is looking forward to continuing to work alongside the Community Futures team on the next steps.
- Attended both the public and community stakeholders forums and assisting Community Futures team where required.

## Ohai Hall

- Ohai CDA are planning significant amount of work on the hall, will work with them over the coming months on funding planning and options.





## Venture Southland Projects and Activities Report February - March 2016

**Record No:** R/16/4/6223  
**Author:** Hunter Andrews, Communications Manager Venture Southland  
**Approved by:** Rex Capil, Group Manager Community and Futures

☐ Decision ☐ Recommendation ☒ Information

### Purpose

- 1 The purpose of this report is to update the Southland District Council on Venture Southland projects and activities for February and March 2016. The accompanying document provides highlights and a full report.

### Recommendation

**That the Policy Review Committee:**

- a) **Receives the report titled “Venture Southland Projects and Activities Report February - March 2016” dated 10 May 2016.**

### Attachments

- A Report to Venture Southland Joint Committee - 18 April 2016 - Projects and Activities Report February - March 2016 [View](#)

**To:** Venture Southland Joint Committee

**Date:** 18 April 2016

**Subject:** Projects and Activities Update February – March 2016

**Author:** Hunter Andrews, Communications Manager

**Approved:** Paul Casson, Chief Executive

---

### **SUMMARY**

Venture Southland projects and activities update for February – March 2016.

### **RECOMMENDATION**

THAT THE VENTURE SOUTHLAND PROJECTS AND ACITIVITES REPORT - FEBRUARY – MARCH 2016 REPORT BE RECEIVED.

### **COMPLIANCE STATEMENT**

This recommendation is consistent with the Venture Southland Business Plan 2015/16, which has been adopted following public consultation.

### **SOME OF THE HIGHLIGHTS CONTAINED WITHIN THE REPORT:**

#### **Regional Business Partner Programme**

Venture Southland has seen a significant increase in uptake of business support services through the Regional Business Partner Programme, so far, in 2016. While the start of the year is traditionally a busy period, as companies plan their activities for the year, 2016 has been particularly busy. A significant factor in the growth has been the increased levels of training associated with Health and Safety. This has been particularly evident across the dairy sector.

#### **Awarua Satellite Ground Station**

Venture Southland has continued to provide oversight to engineering matters at Awarua and Lochiel on behalf of satellite operators hosted there. A visit from a potential new operator from Europe is scheduled for April 2016.

The arrangement with existing satellite operators to share the costs for installing fibre-optic connectivity to the Awarua Satellite Ground Station has been agreed and will be funded by

one of the international partners at the estimated \$130,000 cost, and new users will pay a capital connection cost as these parties take up the service.

#### Aeromagnetic Survey of Southland

In November 2015, New Zealand Petroleum and Minerals (NZPAM) began the aeromagnetic survey in Nelson and Marlborough and in January, the survey began in Southland and Otago. The aim of the survey is to get better insights into geological hazards (including fault lines); understand regional water resources; and gather information on climate, soil and geology. The data gathered will be available free to industry and investors.

#### 2016 Southland Business Survey

Venture Southland is once again measuring the level of confidence within the Southland business community. This is the third year that Venture Southland has surveyed the Southland business community. Data collected in the two previous surveys has been used to contribute to and to develop a wide range of regional initiatives including the Southland Regional Development Strategy - the Southland Regional Labour Force Survey, as well as sector training, events and initiatives.

#### Invercargill i-SITE & Visitor Information Services

The information services team have experienced a busy February, with a 10% rise in revenue from bookings and retail, while averaging an additional 6 non-financial transactions per hour (e.g. destination advice, events information and giving directions). March was quieter, with an 8% drop in bookings compared with the same period in 2015, and with approximately 3.5 non-financial transactions per hour. However the retail sales showed a 17.5% increase over March 2015.

#### Southland Festival of the Arts

The Festival begins on April 26 and continues into May. Venture Southland programmes and selects the festival and coordinates nine events with eighteen performances around the region.

#### Southland Cycling Strategy

**Status:** **UNDERWAY** - due to be completed by June 2016.

The strategy will provide direction for planning and investment decisions and will identify feasible projects for inclusion in future works programmes aimed at improving cycling infrastructure and opportunities in the region. A Steering Committee has been formed consisting of representatives of the three Councils plus Sport Southland. A preferred contractor has been selected and public consultation is soon to get underway.

#### Winton Memorial Hall Upgrade

Funding applications have been submitted for the major upgrade of the Winton Memorial Hall. \$50,000 was recently granted by the Community Trust of Southland. Further funding applications were submitted to the Lottery Community Facilities Fund, SDC Community Initiatives Fund and gaming machine funding organisations. These further funding applications are currently pending.

#### Mossburn Rugby Club

Venture Southland staff are working alongside the Mossburn Rugby Club to assist with securing funding towards the installation of lights for one of the rugby fields. Planning is also underway for the removal of power lines and poles.

## BUSINESS TEAM

### Wood Energy South

There are four feasibility projects completed or currently underway. These include: Corrections, Tisbury School, Danone and S.I.T. The S.I.T feasibility will be completed by students as part of their research project with Wood Energy South providing the technical support and guidance. A second project for S.I.T students is examining the volume of combustible waste from Southland businesses.

The National Specifier and Consultants practice paper has endorsed by the Bioenergy Association of New Zealand and IPENZ endorsement is being sought. This paper will be officially launched in May in conjunction with an Industrial Symposium which will highlight case studies from Europe and will focus on high volume; large scale boiler systems fuelled by wet wood chip and mixed biomass fuels.

### Methane Recovery

A study of the dairy methane recovery project will be undertaken to evaluate the electrical, thermal and biological performance of installation with a view towards wider use of this technology for efficient investment. An integrated plan and typical design for a methane recovery system has been completed with consultants from Parsons Brinckerhoff and Venture Southland is now developing a monitoring plan and funding proposal with NIWA, EECA and DairyNZ to support the concept of making this a reliable and streamlined process.

This work will review the installation, design, methodology and technology integration to provide a framework for the development of a repeatable process for similar farms, process industries or even human effluent treatment systems.

### Awarua Satellite Ground Station

Venture Southland has continued to provide oversight to engineering matters at Awarua and Lochiel on behalf of satellite operators hosted there. A visit from a potential new operator from Europe is scheduled for April 2016.

The arrangement with existing satellite operators to share the costs for installing fibre-optic connectivity to the Awarua Satellite Ground Station has been agreed and will be funded by one of the international partners at the estimated \$130,000 cost, and new users will pay a capital connection cost as these parties take up the service.

### Silica

Venture Southland has completed a Silica Opportunity profile. This project is focused on process technology, market trends, infrastructure, electricity demands and the consent related matters, economic impacts and financial viability. This document is currently being peer reviewed.

Detailed analysis of the Southland silica gravel samples has been conducted by SINTEF, Norway, confirmed the presence of high quality silica deposits which can be processed to manufacture electronics grade and solar grade silicon.

### Aeromagnetic Survey of Southland

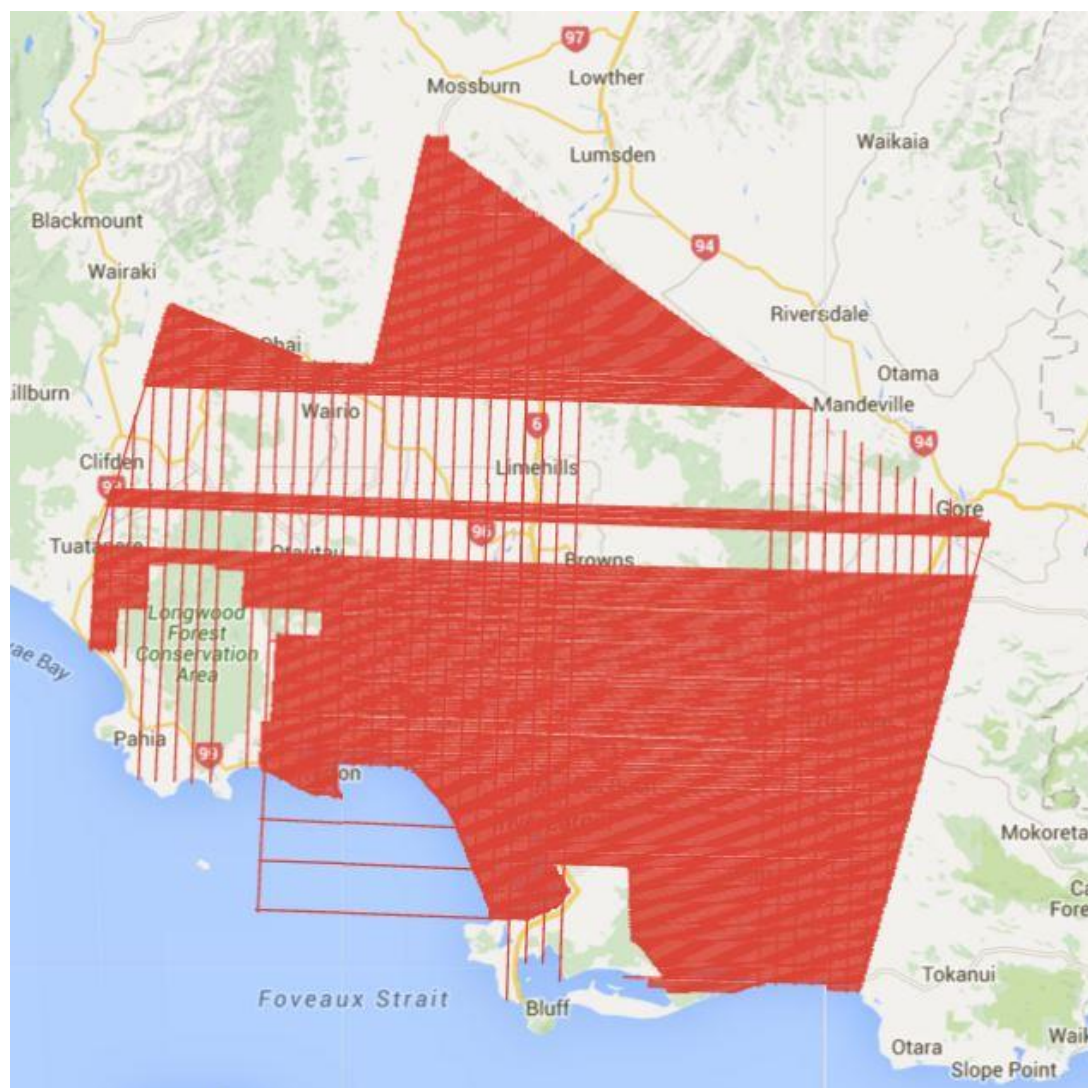
In November 2015, New Zealand Petroleum and Minerals (NZPAM) began the aeromagnetic survey in Nelson and Marlborough and in January, the survey began in Southland and Otago. The aim of the survey is to get better insights into geological hazards (including fault lines); understand regional water resources; and gather information on climate, soil and geology. The data gathered will be available free to industry and investors.

Australian contractor, Thomson Aviation is flying survey aircraft over the Southern Southland Plains areas to map the geological systems to a depth of 500m and surface soils. The surveying will continue over the 2016-2017 summer, and it is expected to end in March next year.

The Te Anau Basin area has been completed and the survey data first iteration analysis has been completed three weeks ahead of schedule and passed on to SDC.

The first iteration of the mapping data analysis will show the general nature of the geological systems a further iteration of this data will most likely be necessary to gain a more detailed understanding of water resources (location and volume). Venture Southland will contribute \$100,000 towards this interpretation work. The Councils may also choose to invest in further aerial mapping and data analysis for areas of specific interest to them.

As of 7 March 2016, Thomson Aviation have acquired 21,731 line km in Southland (Block FG), which is 72% of the survey block (area that has been surveyed to date is shown below in red). The Southern Southland area is now close to completion and the data analysis has been initiated.



#### Southland Youth Futures – ‘Invest in Youth’

Southland Youth Futures 'Invest in Youth' media campaign officially launched in Saturday's issue of *Southland Times* on 27 February. The full page advertisement called for businesses to commit to developing and training young people in Southland to meet their labour force skills shortages.

One of the biggest challenges for businesses highlighted in the Southland Business Survey 2015 is attracting and getting the right staff. Nearly 60% of survey businesses surveyed recognised that recruiting and retaining staff will impact on their business in the next three years.

The Invest in Youth initiative proposes another way for employers - connecting with young people before they leave school. A Working Group of 12 committed Southland businesses have adopted youth friendly practices and will be speaking at nine Southland secondary schools in April and May this year about productive industries job opportunities. The programme also includes site visits in May for interested young people, and work experience in the July and September school holidays.

An Invest in Youth workshop held for Southland businesses on 31 March 2016 had HR consultant Melissa Vining explain practices for mentoring young staff. Business Partner Niagara Human Resource Advisor Tarl Barnes spoke on behalf of the Working Group about why their business is committing to investing in youth and what the Employers Excellence Model's youth friendly standards means to their business.

A total of 20 businesses attended the workshop out of initial interest from over 30, and five more businesses are keen to join the Business Partners to be involved in connecting young people with job opportunities in schools.

You can visit [www.southlandyouthfutures.nz](http://www.southlandyouthfutures.nz) to hear first-hand from young people about the opportunities their workplace has given them to train and learn on the job.

#### Regional Labour Market Strategy 2015-2031

Workforce skill attraction and recruitment continues to be the number one strategic priority for businesses in Southland. The Labour Market Assessment undertaken by Venture Southland has informed the key outputs enshrined in the Regional Development Strategy.

'Welcome to Southland' newcomers information guides are currently being redeveloped. Venture Southland is working with employers, migrants and support agencies to ensure that the proposed guidelines meet the requirements. These documents are also being translated into Chinese, and a range of additional languages is being assessed. An integral part of the updated resources are guides to employers to ensure they start a successful settlement programme with both their staff member and wider family. Options for resourcing the Labour Market initiative are being investigated.

#### Regional Business Partner Programme

Venture Southland has seen a significant increase in uptake of business support services through the Regional Business Partner Programme, so far, in 2016. While the start of the year is traditionally a busy period, as companies plan their activities for the year, 2016 has been particularly busy. A significant factor in the growth has been the increased levels of training associated with Health and Safety. This has been particularly evident across the dairy sector.

Venture Southland will continue to work with NZTE to ensure the available funding matches demand as closely as possible.



Interest in Research and Development grants has also been higher than normal in the first quarter of 2016. Venture Southland is working with a number of companies across a variety of industries to either connect them with experts to assist in their development or to access funding support through Callaghan Innovations grant system.

Callaghan Innovation have also committed to running a number of Design Thinking and Innovation Ready workshops in the region across the year, to help prepare businesses for innovation and to make those who are already innovating more aware of the range of programmes and services on offer.

#### Business Mentors New Zealand

The Business Mentors programme, which is now contracted as part of the Regional Partner Programme, has had steady interest in the first quarter. Venture Southland will be holding a business mentors accreditation seminar, for new and existing members on the 28<sup>th</sup> April. This provides the opportunity for those new to mentoring to understand the programme and process as well as learn new skills. It is anticipated that 10 new business mentors will register for the programme, increasing the Business Mentor pool to over 50 mentors.

Lisa Ford, the General Manager from Business Mentors New Zealand, will also host an event that evening for Southland mentors, to recognise their on-going contribution to the success of the programme.

#### Southland Dairy Lean – Farm Tune

The 12 farms, in the 2016, are now currently half way through the formal programme. Feedback on the initial sessions has been very positive. The formal training programme will continue until the end of April, with follow-up and on-farm session continuing throughout the year.

The programme has seen increased interest following recent pay-out announcements and increased focus on health and safety. Venture Southland is currently working with DairyNZ to rapidly expand the programmes scale to meet increasing demand.

DairyNZ is currently in discussions with Callaghan Innovation to contribute to the growth of the programme delivery. This work with DairyNZ relates to trying to align Callaghan Innovation's focus on technology extension with the primary industry need.

#### Lean Manufacturing - 2016 Lean Cluster

The 2016 Lean Manufacturing Programme has begun with 6 companies participating. These companies come from a range of industries across the region.

Pipers Produce, Retro Organics, Lewis Windows and Doors, Vet South, Phoenix Services and NES began the programme in early March and will continue with the training for the next 6 months.

After significant discussions with Callaghan Innovation, they have agreed to support the Venture Southland Lean Cluster initiative. They will contribute funding to the on-going Lean training of both larger and small scale businesses. While the Southland model doesn't directly fit their Lean funding programme, they have recognised the contribution that this programme makes to enabling businesses across a wide range of sizes that are often interconnected, to gain efficiency through Lean thinking. This is currently the only Lean cluster programme funded by Callaghan Innovation and recognises the significant impact the programme has made over an extended period of time.

As well as improved productivity, one of the outcomes of the Lean programme is the establishment of a platform for the implementation and on-going delivery of comprehensive health and safety programmes. Callaghan Innovation also sees it as a tool to enable innovation and will look to leverage the programme into their wider support structures.

#### 2016 Southland Business Survey

Venture Southland is once again measuring the level of confidence within the Southland business community. This is the third year that Venture Southland has surveyed the Southland business community. Data collected in the two previous surveys has been used to contribute to and to develop a wide range of regional initiatives including the Southland Regional Development Strategy - the Southland Regional Labour Force Survey, as well as sector training, events and initiatives.

The survey touches on the current business environment, where Southland companies are doing business, where they are exporting, challenges, use of new technology and employment trends among other topics.

The 2015 survey highlighted that 58% of businesses said that finding the right people was their top challenge, up 20% on 2014. Exports and business confidence were strong and more businesses were online - many using social media.

Because the survey is undertaken annually, we are able to track trends and impacts of factors such as global commodity price fluctuations and online retail, on Southland businesses

The survey opened on 01 March and concluded on 1 April. A total of 421 businesses completed the survey. This level of response allows for the analysis to be completed at a 95% confidence level +/- 4%. The data analysis will be concluded by the end of April 2016.

#### Retail Workshop

Venture Southland is bringing First retail Group to Invercargill for a one-day workshop for Southland retailers of all sizes and formats on 20 April 2016.

To stay relevant, successful business owners understand trends, re-define their proposition and delivery – and reach beyond traditional trading boundaries. First Retail Group will offer retailers practical tips and tools to succeed in the rapidly transforming retail environment, where customer behaviour and expectations are changing fast. The team will discuss key drivers influencing shoppers today and share ways in which businesses of all sizes can leverage these trends and opportunities. A Southland Regional Development Strategy representative will also be in attendance.

To view the workshop flyer, click here

[http://www.venturesouthland.co.nz/images/retail\\_success\\_workshop-a5.pdf](http://www.venturesouthland.co.nz/images/retail_success_workshop-a5.pdf).

### **SOUTHLAND TOURISM & EVENTS TEAM**

#### Media Results and Familiarisations

Venture Southland hosts a number of famils with media different platforms including social media, print and digital. Please see list below that includes the areas that were explored along with the journalists name and publications they are associated with. Southland stories from famils (familiarisation) facilitated by Venture Southland have featured in number of national and international magazines, newspapers, international websites and television shows.



- Otago Daily Times (Andrew Tait) – Stewart Island, February 2016
- Bike Rider Magazine (Kevin Kingham) – Burt Munro Challenge, February 2016
- Woman's Day (Sarah-Kate Lynch) – Transport World, February 2016
- Kia Ora Magazine – Southland Events February 2016, April 2016
- PuntoIT Italian Publication – Stewart Island – February 2016
- New Zealand Geographic (Shaun Barnett, Craig Potton) Stewart Island – March to April 2016
- NZ Herald Travel (Louise Richardson) Taste of Southland, Savour the South - March 2016
- Perth Now (Chris Pritchard) This is the Island Kiwis call Home, Stewart Island – March 2016
- Meeting News, Incentive adds a Southern Touch, ILT, Invercargill, Bill Richardson Transport World, Heartland Hotel Croydon – March/April 2016
- NZ Herald Travel (Louise Richardson) Deep South – Southland, Catlins, Riverton, Stewart Island, Western Southland – March 2016
- NZ Herald Travel (Louise Richardson) A rich journey back through time – Croydon Aviation Heritage Centre, Bill Richardson Transport World, Eastern Southland Gallery – March 2016
- TNZ (Tony Rogers - Special Interest Publication) – Clutha, Gore, Stewart Island, Invercargill
- TNZ IMP (Josha Remus - Germany) – Stewart Island
- TNZ IMP (Win Schumacher - Israel, Germany, Austria, Switzerland) – Stewart Island, SSR (West), Invercargill
- Life and Leisure (Cheree Morrison, Jane Usher) – Invercargill, Riverton, Heritage Harvest Festival
- In To New Zealand (Chinese Documentary —Actor Shawn Dou with Adventurer Gang Zheng) Southland featured in 3 of 6 episodes – more than Auckland and Rotorua who are featured twice. Burt Munro Challenge, E Hayes and Sons, Wairaurahiri/Western Southland

#### Trade Shows, Famils & Promotion

The utilisation of trade channels such as inbound operators (IBOs) and national tourism organisations (Tourism NZ) is a recognised format for driving sales to commissionable products (businesses that charge and offer commission to distribution channels) and building brand recognition in an affordable manner. Trade activities for the period include:

- Kiwilink Activity – Japan/Korea
- Market Insights/RTO Workshop Sydney (one-to-one meetings with Australia based IBO, wholesaler and channel partners)
- UK with IMA representation (Enterprise Dunedin)
- Generous Southern Coast Meeting, Christchurch (meeting with Chc Airport, Waitaki RTO, Enterprise Dunedin about shared promotion)

Consumer Campaigns, Digital/Social Media and Consumer Shows

The Southland tourism team undertakes and participates in a number of consumer focused campaigns. These appeal directly to consumers to create awareness, shape perceptions, influence decision making and act as call to actions through major information sources. Below is a list of consumer activities undertaken by Venture Southland for the past three months:

- Air NZ Airpoints for Business promotion – targeting Business owners/managers
- Southlandnz Facebook Reach for Feb 2015 through to Mar 2016 totalled 444,331
- Southland.nz Instagram Followers from end of Jan 2015 to Mar 2016 increased from 6802 to 10,100 followers
- Secrets of South – targeting AKL, WELL and CHC – with featured content in Herald Travel Magazine, the Coast radio station and Herald Online
- On your door step preparation – targeting locals with local products in shoulder season
- Air NZ Grabaseat – Bluff Oyster and Food Festival package promotion – bringing an A320 jet to Invercargill from Auckland for the day (notably this sold out (169 seats) in under 4 days)
- Z, AVIS & Kit Kat Take a break promotion – point of sale promotion at Z petrol stations
- MoreFM Radio Jase and Lana Show – Bluff Oyster Festival Opening – Oyster giveaway
- i-SITE Social Media Plan put in place with focus on events marketing and increasing followers
- Mini Event Promotion – including the Farm Jam, Sharks Basketball, Heritage Harvest Festival, Lap the Lake, Festival of the Arts, & Southland Multi-cultural Food Festival

Invercargill i-SITE & Visitor Information Services

The information services team have experienced a busy February, with a 10% rise in revenue from bookings and retail, while averaging an additional 6 non-financial transactions per hour (e.g. destination advice, events information and giving directions). March was quieter, with an 8% drop in bookings compared with the same period in 2015, and with approximately 3.5 non-financial transactions per hour. However the retail sales showed a 17.5% increase over March 2015.

On Friday, 1 April the Southern Region i-SITE Managers meeting was held in Invercargill. This meeting takes place three times a year and includes managers from Invercargill, Oamaru, Dunedin, Central Otago, Queenstown, Lake Wanaka, Fiordland and Clutha i-SITES, and also a representative from i-SITE New Zealand. There were discussions on a variety of topics including the new Health and Safety Legislation, i-SITE membership requirements, the i-SITE brand refresh, and freedom camping. Each i-SITE also reported on their results over the previous quarter.

Tourism Liaison Committee and SoRDS

In March the Tourism Liaison Committee met for the sixth time at the Ascot Park Hotel. Agenda items included an introduction to the Southland Regional Development Strategy (SoRDS) from Chris Ramsay, a review of key tourism statistics and the new quarterly Accommodation Surveys.

Other general agenda items included:

- Development of an events calendar for planning use by accommodation operators
- TLC & SoRDS workshop facilitated by Venture Southland for industry and public consultation on development ideas
- Sector updates from districts and businesses from various members of the committee.

Venture Southland is providing support for SoRDS with representation on the tourism and destination attraction action teams.

#### Southern Scenic Route Steering Committee

The SSR Committee met in March to discuss the changes and reprint of the SSR brochure, final design changes will be submitted to the graphic designer by 18<sup>th</sup> April with the print run being completed by June. The committee also discussed changes to the road safety information on the website and creating a social media campaign to begin with the release of the new-look brochures.

#### Product Development, Industry Engagement, Business Advice and Projects

The tourism team met with and advised a variety of tourism sector operators and is undertaking projects in relation to:

- Southland Museum and Art Gallery (Invercargill) – product development
- Waihopai Wharekai Redevelopment Project (Murihiku Marae) (Invercargill) – product development (ongoing)
- Croydon Aircraft Company/Croydon Aviation Heritage Centre/Gore District Council (Gore) – strategic development (ongoing)
- Te Hikoi (Riverton) – product development (ongoing)
- The Good Studio (Riverton) – diversification project
- Borland Lodge Adventure and Education Trust – digital review
- Hospitality NZ (Invercargill & Gore) – accommodation sector research
- Welcome Rock Trails (Garston) – Business mentor and events
- Beaks and Feathers, Curio Bay Accommodation, Tussock Country, ILT, Bill Richardson Transport World, Experience Mandeville – developing trade product
- Regional Cycling Initiatives
- STQRY project

#### Conference Incentive Fund

In September 2014, Venture Southland and the Invercargill Licensing Trust entered into a partnership to attract conferences to Invercargill. The fund has now been operating for 14 months and to date this fund has attracted 12 conferences to Invercargill. This includes 6 in 2016 and 2 scheduled for 2017. We are currently looking at options forward which will continue to provide incentives to attract conferences.

#### SDC Holiday Programme

This year's attendance numbers increased 33% on 2015. Based on feedback from the 2016 Southland District Council Holiday Programme, the programme continues to be very popular with families in the district with 50% of them having never attended the SDC Holiday Programme before. These statistics reinforce the success of the programme whilst ensuring that it continues to be well utilised by the Southland community.

#### ILT Kidzone Festival

Planning is underway for the 2016 ILT Kidzone Festival which is being held at James Hargest College Senior Campus from Wednesday 13 July to Monday 18 July. A new website is currently being developed and all our promotional material is with the designer. Tickets are on sale from Monday 16 May from the festival website ([www.iltkidzone.co.nz](http://www.iltkidzone.co.nz)); the Invercargill i-SITE, Southland District Council Area Offices and the Gore Visitor Centre.

Interschools' Speech Competition

The 2016 Venture Southland Interschools' Speech Contest is all go with both the area finals and the grand final scheduled for September. The contest involves two levels: Level 1 - Years 5 and 6 and Level 2 - Years 7 and 8. This year we have had a record 61 schools register for the competition which will see the very best speakers from all over Southland battle it out for top honours in oral language presentation.

Summer Sounds of Southland—outdoor concerts

This is the third year that a suite of outdoor performances showcasing local musicians was presented. Concerts were held in South City, Glengarry and two in Invercargill including the popular Waitangi Day concert. Hundreds of people attended and the bands were very well received. A fifth concert planned for Bluff was cancelled due to inclement weather. Due to circumstances, the rain-out replacement concert was not staged. It is planned that there will be two concerts in Bluff next year to make up for this lost opportunity. The concerts were supported by the Invercargill Creative Communities Scheme, the ILT and The Ministry of Culture and Heritage's Waitangi Day Celebrations Fund

Southland Buskers Festival

Venture Southland supports the ICC Charitable Trust's presentation of four days of professional street performance, with acts selected from the World Buskers Festival in Christchurch. The festival, now in its seventh year, attracted thousands of people to Queens Park, Wachner Place and the Southern Farmers' Market.

Shakespeare in the Park

Five performances of the comedy A Twelfth Night were presented in Queens Park in February. Directed by local thespian, Jonathan Tucker, the show involved a cast and crew of thirty. The production is presented by the Shakespeare in the Park Charitable Trust and produced by Venture Southland. Around one thousand people attended the sixteenth annual event.

Southland Festival of the Arts

The Festival begins on April 26 and continues into May. Venture Southland programmes and selects the festival and coordinates nine events with eighteen performances around the region.

Creative New Zealand's Regional Arts Pilot for Southland

This arts-based pilot will attract \$400,000 into the region over two years. The contract is managed by Murihiku Arts Incubator with Venture Southland providing support and advice.

**DESTINATION FIORDLAND**Effectively Engage with Travel Trade

- Appointment schedule submitted for TRENZ – Sarah and Philippa attending. Fiordland Outdoors Company, Trips & Tramps, Destination Fiordland, Distinction Hotels, Luxmore Jet and Fiordland Lodge have registered.
- Sarah attended TNZ RTO Workshop in Sydney in March (15-18 March) – face to face meetings with Australian agents
- Post RTO Workshop sales calls and frontline training completed with 6 agents and Tourism New Zealand in Australia
- Hosted Alana from TNZ – Trade Development Executive for North America based in LA.

Effectively engage with Media

- Hosted the photographer from Discover Magazine (the inflight magazine for Cathay Pacific)
- Hostel Japan TV Crew doing a recce for popular Japanese Travel Show (TNZ). Will return in April to do the shoot.
- Assisting Fox Films with information for the film shoot in Milford Sound (direct/Venture Southland)
- Hosted social media influencer – Bear Foot Theory
- Liaison with TNZ on TV show filming in Fiordland

Domestic Marketing

- Promotion of Te Anau Tartan Festival and Te Anau Enduro
- Hosted More FM in Te Anau as part of the Real Journeys promotion in February

Develop a robust online presence

- Phase 2 of [www.fiordland.org.nz](http://www.fiordland.org.nz) in progress
- Instagram followers increased from 442 to 600 since last report
- Facebook likes increased from 4901 to 5129 since last report
- Google Analytics for [www.fiordland.org.nz](http://www.fiordland.org.nz) – for 1 Nov 15 to 31 Jan 16 – users up 35%, sessions up 32%, page-views up 13%, 78% increase in visits from Android, 37% from IOS. 87% increase in usage from Mobile device.

Develop & Communicate the DF brand

- Attended the first branding workshop initiated by Air New Zealand who paid for flights to Auckland for the attendees. 20 of the 30 RTOs attended. Air New Zealand has commissioned a design consultancy to work with the RTOs on branding and communicating the brand. 2<sup>nd</sup> workshop in April.
- The work completed at this first workshop has been distributed to the DF Board for feedback
- Friday radio slot continues
- Article in the Advocate continues through 2015
- Maintaining activity on Instagram and Facebook

Effectively engage with, promote and support DF members

- Fast Facts continues in Campaign Monitor – good stats for this. 40% of recipients opened the last edition
- Date set for Fiordland Tourism Expo – 14<sup>th</sup> October 2016
- Date set for next networking function – 19<sup>th</sup> April
- Setting up Health & Safety and Employment workshop for late April

Develop & Maintain Key Relationships

- SL attending European Product Workshop in April (London), Best of NZ Series July or Sept (USA), Kiwi Link India July (Mumbai), Kiwi Link LATAM Sept (Brazil, Chile, Argentina), Kiwi Link SEA (Indonesia)
- Working with Southern Lakes on TRENZ attendance/stand/networking function
- Attended Southern Lakes Meeting in Queenstown
- Sarah attended Southern Scenic Route meeting
- TCB & SDC – attended Cycling meeting in Te Anau

Develop & Enhance Relationship with Venture Southland

- Looking at joint iSITE famil later in year
- Attended LEAN management workshop in February
- Attended All Staff meeting remotely in March
- Looking at joint opportunities after IBO Trade Event in Auckland – famil programme

Use local events to promote the region

- Te Anau Enduro (March) – ran successfully and will probably become a regular fixture on the events calendar
- Te Anau Tartan Festival (Easter) – another successful event – the Pipeworkz concert on Easter Friday was a sell-out. The highland games were popular but not as many people as last year – perhaps a reflection that Warbirds was on in Wanaka this year.
- Continue with hiring equipment to community groups
- Funding applications. Working with the Te Anau Rodeo Club on quotes for some Portaloos. Also investigating funding for a new events sign at the entrance to town
- With funding from the Te Anau Community Board ceasing in 2018, the Trust has agreed to be part of the organising group for a second “**Battle of the Lakes**” event, which is held in conjunction with Gerry Forde (Spirit of a Nation). While this will be a huge amount of work, it is expected that our share should be around the \$10K mark. The date has been set for Saturday 13 August.

Recent media results

- **Life and Leisure (NZ)** – March 2016, Fiordland activities included in a Southland feature(Venture Southland)
- **Bear Foot Theory (Feb 16)** – social media influencer – 11.7k followers on Instagram, 50k new visits per month to website [www.bearfoottheory.com](http://www.bearfoottheory.com)
- **Wilderness Magazine (NZ)** – March 2016 – Takitimu feature
- **Go Travel (NZ)** – Autumn 2016 – Fiordland feature
- **RV Travel Lifestyle** – March/April 2016 – Road to Milford feature

**COMMUNITY DEVELOPMENT TEAM****Regional Initiatives and Significant Projects**Curio Bay Tumu Toka Vision

Possibly the busiest stage of the project in its 15 year history with all aspects due to be completed and/or built by the end of 2016 (accommodating penguin breeding and nesting times; peak visitor season):

- The South Catlins Charitable Trust is making significant progress preparing a new ablutions block in Invercargill to be transported to the Curio Bay Campground next month.
- This Trust is also confirming final alterations to the Natural Heritage Centre in preparation for a building consent application to be submitted. Please note that the DOC public toilets are attached to this facility and it remains at a central arrival point to the area.
- The Trust will soon ask for expressions of interest from interpretation consultants who will develop and design the interpretation components associated with telling the story of



the Jurassic period (and 180 million year old petrified forest); tangata whenua and local wildlife. An Exhibition Brief has been developed by Venture Southland with consultation from the Trust, iwi and DOC.

- DOC is progressing concept plans for the new car park and has recently generously donated paint through Dulux for the project.
- SDC is finalising details regarding the waste water;
- Successful Governance Group meeting in March with another planned in April.

Venture Southland is providing overall assistance with coordination of all components associated with achieving the vision and working closely with the Trust in particular. The project is at a critical stage after many years of preparation.

With growth in tourism in the region, particularly in the Catlins and along the Southern Scenic Route, there is more and more need for improved visitor management, provision of adequate infrastructure and high quality unique visitor experiences – all which will be provided with this project thanks to a collaborative approach from key stakeholders.

#### Switzers Waikaia Museum Redevelopment

The old museum has been demolished and the site prepared for the build of the new facility. All funding has been secured for this project including generous support from community funders, SDC and locals (through a sustained fundraising effort over many years). The collection has been successfully catalogued and stored by the Roving Museum Officer and the Committee over many months and there is a high level of excitement within the community.



### **Research and Strategies**

#### Southland Heritage Sector Research

**Status: COMPLETED**

The aim of the research was to undertake investigation into the heritage sector in Southland that not only provides insights into the current situation, but also identifies key issues, challenges and opportunities associated with future development, support and funding.

It looks at issues associated with delivering heritage at a local level and a key project identified is the need for regional storage. The document is currently being peer reviewed and a final draft will be presented to the Southland Regional Heritage Committee shortly.

#### Southern NZ Cruise Destination Strategy

**Status: COMPLETED**

The review has been completed, and a draft document produced. Venture Southland will now assist with implementation alongside key stakeholders.

#### Southland Cycling Strategy

**Status: UNDERWAY - due to be completed by June 2016**

The strategy will provide direction for planning and investment decisions and will identify feasible projects for inclusion in future works programmes aimed at improving cycling infrastructure and opportunities in the region. A Steering Committee has been formed consisting of representatives of the three Councils plus Sport Southland. A preferred contractor has been selected and public consultation is soon to get underway.

Catlins Tourism Strategy Review**Status: COMPLETED – implementation underway**

This development of this document was facilitated by Venture Southland at the request of the local community. In partnership with a number of stakeholders, it identifies that there has been and continues to be significant growth in visitor numbers in the Catlins. A framework has been developed which identifies projects associated with infrastructure, product development, promotion/marketing and environment and heritage. Venture Southland is currently working alongside Catlins Coast Inc to identify priority projects and an implementation process.

Pool Heating Assessments**Status: UNDERWAY – due to be completed by July 2016**

Pool heating assessments are currently underway for the following pools – Riverton, Otautau, Tuatapere, Manapouri, Fiordland, Hauroko and Riversdale.

These reports will identify for each pool various options in regards to making their pool more energy and cost efficient. The Riversdale pool heating assessment has been completed and the school has recently installed a solar heating system. One option is to closely monitor how it goes this next season – this information will be useful for other pools looking at similar technology.

Volunteer Research**Status: UNDERWAY – due to be completed end of 2016**

The goal of this research is to review the 2010 Community Organisation Needs Assessment (CONA) with particular emphasis on volunteering in the community. There are two key objectives relating to understanding both the Southland volunteer sector and also the people who make up this sector (many as volunteers). This is key piece of work of interest to the Southland Regional Development Strategy.

Ohai Nightcaps Research**Status: COMPLETED**

This research looked at declining communities, with particular focus on Ohai and Nightcaps. Dr Natalie Jackson was contracted to provide demographic insights into this community and the SDC Community and Futures group is now looking at the next steps. Venture Southland will continue to partners with SDC and will support where required.

**LOCAL INITIATIVES**

The Community Development team has been busy preparing funding applications for the recent rounds of the Southland District Council funds:

- SDC Community Initiatives Fund
- Southland Regional Heritage Fund
- Southland District Heritage Fund
- Sport NZ
- Creative Communities NZ
- Northern Southland Development Fund

The Community Development team work alongside a large number of community groups and initiatives throughout the year, providing a range of services. The following are a brief update of just some of these projects:

Kohi Kohi Cottage

Venture Southland staff are working alongside the Southland Heritage and Building Preservation Trust with stage two of the restoration of Kohi Kohi Cottage. \$10,000 funding



from the Community Trust of Southland has been secured to date and further funding applications are pending.

#### Winton Memorial Hall Upgrade

Funding applications have been submitted for the major upgrade of the Winton Memorial Hall. \$50,000 was recently granted by the Community Trust of Southland. Further funding applications were submitted to the Lottery Community Facilities Fund, SDC Community Initiatives Fund and gaming machine funding organisations. These further funding applications are currently pending.

#### Wyndham SDC Service Provision Review

Venture Southland staff are working alongside the Southland District Council as part of a project team to review the provision of council area office services. Community consultation will be undertaken through key stakeholder meetings, surveying the community and a public forum. Feedback provided during this consultation will guide decision regarding future service provision requirements.

#### Tuatapere Pool

The redevelopment of the pool was completed in December 2015. Venture Southland continue to work alongside the Tuatapere Baths Society with various aspects of the project for examples, accountability for funding, change of land ownership, development of an operational manual and planning processes and further minor plant improvements.

#### Fiordland Vintage Machinery Club

The Fiordland Vintage Machinery Club is planning to expand their facilities by building a new storage shed. Staff are working alongside the Club to identify potential funding sources for operational and capital funding. Assistance has been provided with funding applications.

#### Mossburn Rugby Club

Venture Southland staff are working alongside the Mossburn Rugby Club to assist with securing funding towards the installation of lights for one of the rugby fields. Planning is also underway for the removal of power lines and poles.



## Tourism Trends and Issues

**Record No:** R/16/4/6201  
**Author:** Warrick Low, Tourism and Events Maanger  
**Approved by:** Rex Capil, Group Manager Community and Futures

☐ Decision ☐ Recommendation ☒ Information

### Purpose

- 1 It is the intention of this report to provide a brief update on tourism in Southland including insights on visitor numbers and market trends. It is also important to acknowledge factors outside of Southland which affect our region, including the increasing numbers of direct international flights. This report will also touch on the impacts of growth and subsequent pressures that are presented for not only Council, but the wider Southland community – it is currently estimated that over the main tourist season (now commencing in October through to April) the Southland region is accommodating approximately four times its resident population. The increase in visitors brings opportunities but also requires a collaborative approach and understanding between all those involved directly and indirectly in the industry to fully realise the benefits.

### Significant Recent Growth

- 2 It is undisputed that there have been more visitors in Southland in recent times. While it can be argued that the statistics available to us do not provide a comprehensive picture of the current Southland situation, they do nevertheless reflect this growth:
  - International tourism growth of 10% for the year ended March 2016 (International Visitor Survey)
  - Growth in Fiordland of 10.8% and in Southland of 8.7% (Commercial Accommodation Monitor)
  - Emergence of markets such as China (+27.8%), India (13.8%), Korea (+20.7%) and Argentina (+140%) – note also Philippines.
  - Resurgence of traditional markets particularly Australia (+7.2%), Germany (+11.5%) and the USA (+11.8%)
  - Domestic tourism has been comparably very slow for Fiordland with growth of 1.8% over the last 2 years year, while Southland experienced 8.5% in domestic growth.
- 3 So in short, Southland's biggest market remains the domestic market (\$290 million). The largest international market is Australia and this has grown in recent times. This market is attractive because of their close proximity and ease for them to get here (QTN, DUD, & CHC airports) and ability to repeat visit many times (estimated to be at least 4).
- 4 Traditional markets such as the USA and Germany have shown strong resurgence with increased connectivity and positive perceptions of New Zealand as a safe and 'must do' destination. Specifically for Southland, there is a high resonance with these markets due to special interest activities, access to the nature world and proximity to the resort destination of Queenstown.
- 5 The Chinese market continues to experience significant growth and currently is Southland's 5<sup>th</sup> largest international market that experienced 45% growth for year ended March 2016

(Regional Tourism Indicators). Another observation with this market is the quick evolution of free and independent (or self-driving) travellers, opposed to the traditional coach group travel.

- 6 It is important to remember that the majority of visitors to Southland (70%) are domestic and from other parts of New Zealand, so under a third are international (though notably the proportion of international is increasing). This situation is reversed when we consider Fiordland where around three quarters are of an international origin.
- 7 While exact visitor numbers are at this time impossible to record, the estimate based on commercial accommodation nights in the region, acknowledging daytrip activity (travelling from home residence or alternate accommodation and returning within one day) combined with alternate accommodation forms (such as AirBnB, Bookabach, freedom camping and staying with friends and family) suggest the visitor numbers to the region are in the region of 550,000. This number excludes the vast number that undertake day visitation from Queenstown through to Fiordland attractions (particularly Milford Sound). This estimate suggests that over the main tourist season (now commencing in October through to April) the Southland region is accommodating approximately 4 times its resident population.

### Reasons for Growth

- 8 The growth can be attributed to a number of factors from increased interest in New Zealand as a whole - through to the culmination of years of work marketing and positioning the region and raising its profile so there is awareness of the unique offerings and points of difference in Southland.
- 9 A number of other factors included below relate to what is happening outside the region:
- Tourism New Zealand are focussing on dispersing visitors to the 'regions' and out of places that are at regularly at capacity like Queenstown. They are also focussed on trying to extend the tourism season beyond the traditional period. This is being reflected with an increasing number of joint ventures between Tourism New Zealand and Venture Southland including key campaigns highlighting our regions (of particular interest to them are Stewart Island, Fiordland and the Catlins). Similarly Air New Zealand and Venture Southland are partnering on a number of initiatives to develop Invercargill as a more significant port of entry.
  - Recent media and promotion has highlighted Southland (particularly Milford Sound, The Catlins and Stewart Island) as a desirable destination. These include top world ranking of experiences and celebrity endorsement (Prince Harry).
  - Increased air connectivity to major South Island ports (to Christchurch and Queenstown from USA, Australia and China; as well as increased domestic capacity) – please see the attachment to this report showing projected direct international flights as provided by Tourism New Zealand.
  - SOUTH partnership between Christchurch International Airport and Regional Tourism Organisations (including Southland and Fiordland) encouraging regional dispersal.
  - Pressure on traditional destinations where carrying capacity of accommodation is being exceeded, particularly in international holiday periods i.e. Queenstown.

- While visitation durations continue to be constrained for many markets (Australia 11.3 days, China 8.4 days, USA 13.9 days, opposed UK 27.3 days and Germany 49 days) the South Island is becoming a viable single destination, a return visit destination or short break destination (Tourism New Zealand)

## Benefits and Opportunities

- 10 Tourism growth has generated some significant economic benefits - with the region receiving \$460 million in GDP contribution, in which \$290 million can be attributed to domestic visitors and \$140 million from international visitors.
- 11 The Southland Regional Development Strategy is looking at increasing this to a target of \$1billion in GDP contribution by 2025 (note the national goal is \$41billion). This assumes that infrastructure and services will also continue to be developed alongside product development offerings and experiences.
- 12 The Tourism Industry Association of New Zealand (TIANZ) indicates that the tourism sector contributes directly to the employment of 1 in 10 persons in the region. With MBIE identifying Southland as one of the least diversified regions in the country, the role of the tourism industry as supporting industry provides a strong alternate.
- 13 A challenge is finding a method of securing a proportion of this expenditure to ensure the sustainability of the local industry and communities. This not only includes appropriate economic development, but also a positive relationship between hosts and visitors, maintenance of cultural traditions and the protection of the natural environment and provision of appropriate infrastructure and services.
- 14 MBIE has forecast international visitor numbers to continue to grow till 2021 at a rate of between 3.5 and 4%. Southland is the only region to have consistent growth each month for the last two years, and the only one to have an average double digital growth over this period (11.2%). In only two months did Southland not exceed the national average (Jan 2015, Dec 2016). This suggests that market demand for Southland experiences is strong.
- 15 The challenge remains to maximise the benefit of increasing numbers of visitors for our economy, communities and environment. It is also acknowledged that the focus is not to increase visitor numbers necessarily, it's about increasing the yield or value out of those visiting – get them to stay longer and spend more. You do this by providing more things for them to spend their money on (called Tourism Product) and ensuring there is an ability for them to stay longer (accommodation, infrastructure).

## Considerations

- 16 The down turn in the dairy sector (amongst other things) has seen many regions in New Zealand now focus on tourism to assist with diversifying their economies. Many regions are looking at how they facilitate this including aligning their regional tourism organisations alongside community development and economic development agencies (like what we have been doing in Southland for 15 years). This is important to ensure a collaborative and comprehensive approach.
- 17 However, a key point is that visitors have fixed time for their holidays and are now being actively lobbied by many regions offering a range of diverse experiences. It is therefore very important that Southland continues to understand what kind of experiences different types of people want and then matches it to what we can provide.
- 18 While tourism is booming and there are certainly opportunities that this presents, Southland will not necessarily maximise the benefit of this unless there is a coordinated effort by many to understand what visitors want and what we can provide.

- 19 It is also acknowledged nationally that tourism growth has significant impact on physical environments and host communities. This means there is a need to consider infrastructure provision and investment, as highlighted by TIANZ CEO Chris Roberts. He states that priorities for the sector governance are to co-ordinate and contribute to a significant body of work that identifies:
- The key tourism infrastructure needs in the short, medium and long-term
  - The scale of those infrastructure needs
  - The location and timing of those key infrastructure needs
  - Barriers to investment and options for removing those barriers
  - New funding models and policy setting
- 20 In Southland, we are already seeing that the growth in visitor arrivals has put pressure on some of our most popular destinations - with pressure falling on communities, DOC, Councils and others to provide additional and improved infrastructure, services and experiences to meet visitor demand. Some examples include the sealing of the Catlins alternative Southern Scenic Route highway (although it is acknowledged that this is for local safety as much as for visitors), pressures in Milford and also the proposed developments at Curio Bay.
- 21 We are told that Curio Bay in particular remains a positive example nationally of a Council and DOC (alongside iwi) proactively supporting and working alongside local communities to develop tourism in an appropriate and sustainable manner and according to an overall vision shared by all stakeholders. It also shows the level of collaboration required to:
- meet the needs of visitors in terms of the provision of infrastructure;
  - improve the overall management of visitors to protect the local community and environment;
  - maximise and enhance the recreational opportunities for locals;
  - maximise and realise the economic benefits of the increasing numbers of people who are going to visit 'no matter what' (because of the nature of the appeal of the place);
  - enhance the overall visitor experience and showcase the uniqueness of the area.
- 22 Freedom camping also remains a key issue for not only Southland but all of New Zealand. It presents opportunities and reflects how a large visitor market want to travel, but also highlights the need for careful planning (considering regional visitor movements), management and enforcement of various regulations. Also it is acknowledged that local community's perspectives need to be considered and there can be resistance to any change affecting how things 'have always been'.

### Looking Forward

- 23 While the tourism sector has enjoyed an incredibly strong summer, it is fundamental that both infrastructure and superstructure management and investment are actively considered. This is certainly going to be done at a national level with significant discussion already about possible mechanisms (NB possible tourism infrastructure fund announcement in next month's budget etc).
- 24 Depending on what occurs nationally, it is important that Southland is firstly aware of the current situation; up to date with happenings and working together to align for the benefit of the region.

- 25 Recently the government introduced a cruise ship levy which is intended to help meet the increased costs of visitors using border controls and custom services. This attracted a significant amount of angst from many in the tourism industry related to the relatively short process to introduce the tax and also the potential impact this could have on a burgeoning tourist sector if seen as a barrier.
- 26 Therefore, looking forward, there needs to be robust national and local investigation into different charging mechanisms in response to tourism growth.

Potential options:

**“General Tax”** – apply additional tax to existing tax collection – GST, Fuel, Road Charges

**“Border Tax”** – apply tax to border entry that is directly attributable to tourism and regions

**“Bed Tax/Levy”** – attach levy to commercial accommodation to be administered by

**“User Pays”** - road toll, car park charges, fee access, resource fees (water, wastage)

**“Privatisation of Services”** – outsource to private entities though public-private partnership

- 27 When considering any tax or charging mechanism, it is important to consider the wider perceptions of users and others involved in the industry. For example, is the introduction of a tax going to have more of a negative effect in many ways (including financial) which may negate the funding that is collected from it? Could it mean people choose to not visit and go elsewhere? This could be also related to how it is collected.
- 28 This can have a range of impacts but also needs to be considered from the point of view of Southland being a competitive visitor destination. All tourist services need to be considered as well as there can be a risk to separate them out.
- 29 Private/public collaborations are important and essential moving forward. While councils fill the integral role in leadership and facilitation, it is private investment that is needed to ensure economic growth and also complement Council investment. This is recognised nationally with DOC focusing on private/public partnerships, MBIE tourism growth partnerships fund and regional capability and research exercises.
- 30 Product development – the other side of the equation to marketing promotion is making sure there are things for people to do that have an economic impact, complementing the many free offerings in the region. Also acknowledged that it’s not just about new things, its working to enhance the current offerings, as well as linking/clustering them together. This product development from a private perspective is exemplified by the explosion of tourism experiences that can be found in destinations such as Queenstown and Rotorua.

## Council Perspective

- 31 Growth in the tourism industry presents a number of considerations and opportunities for Council as mentioned in the report above. Some of these include consideration of how to ensure that the costs for the development of tourism infrastructure are attributed to those who benefit. This is particularly challenging in relation to freedom campers and independent travellers, who may not always be linked to a Southland District rating unit.
- 32 Some questions which may be useful when considering future planning include:
  - How can we ensure that funding for tourism infrastructure is equitable for our ratepayers?
  - How does tourism fit within Council’s broader focus on economic growth?
  - Should Council prioritise tourism growth to support economic diversification in Southland District?

- How will tourism product development align with planning for demographic change in Southland District?

- 33 There are a number of possible approaches Council could take towards funding tourism infrastructure in the future. In determining a future approach, it is important to consider the impacts of tourism across all of Council's activities. For example, considering a separate sector for tourism in the roading rate does not acknowledge issues relating to rubbish collection and public toilets.
- 34 Venture Southland is currently working alongside Tamara Dytor and Joe Bourque and other staff to get an understanding of the current situation and options forward from an SDC perspective.

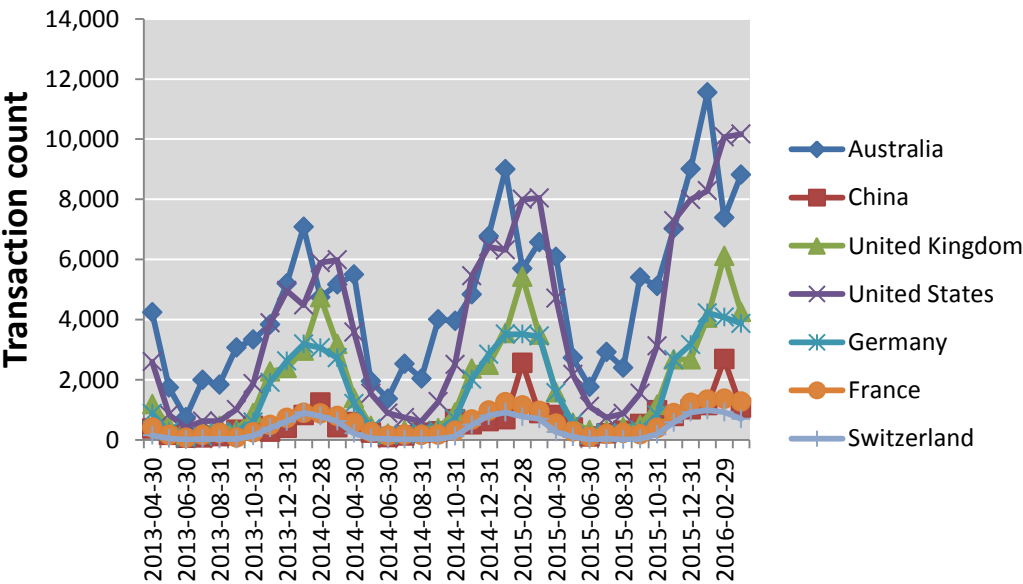
Conclusion

- 35 While the tourism sector continues to be buoyant, and destination marketing continues to be fundamental to supporting the existing and future tourism economy in Southland, key opportunities exist in regard to the development of product and infrastructure. Opportunities in market development exist across the board, particular with penetrating existing major markets such as domestic, Australia, UK, USA, and Germany, while emerging markets such as China and South America offer potential for the future.

Further Information

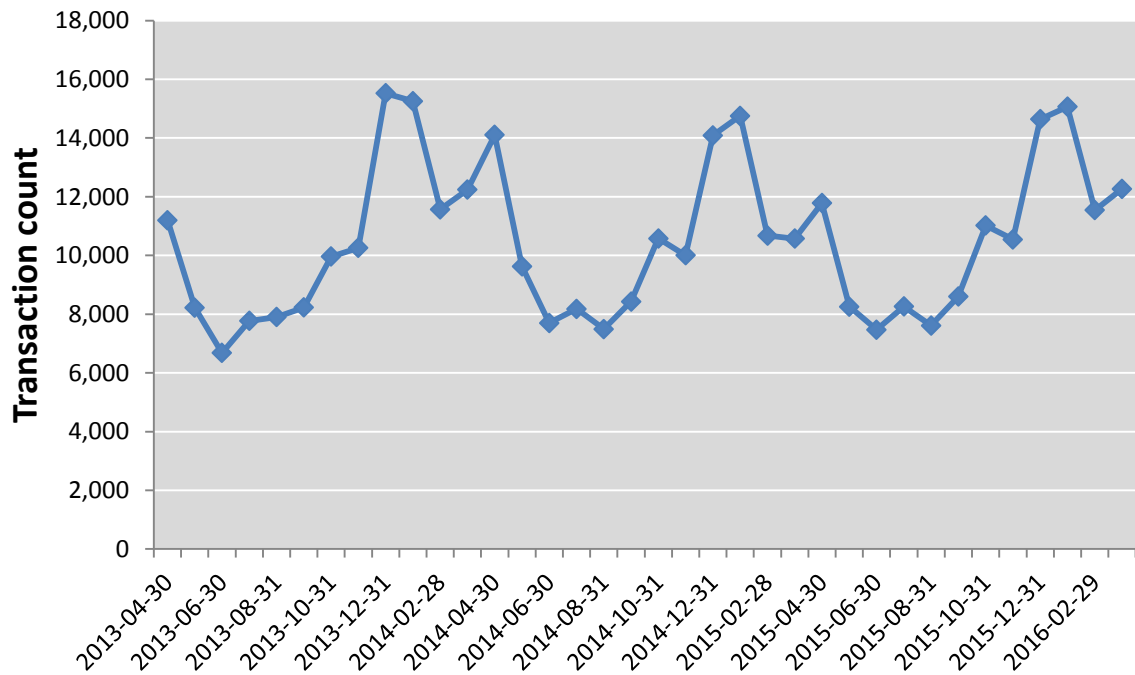
- 36 Please find below a selection of information in reference to this report. This information provides information about international and domestic visitor trends, aviation extensions and other national visitor trends.

Fiordland RTO International Visitation

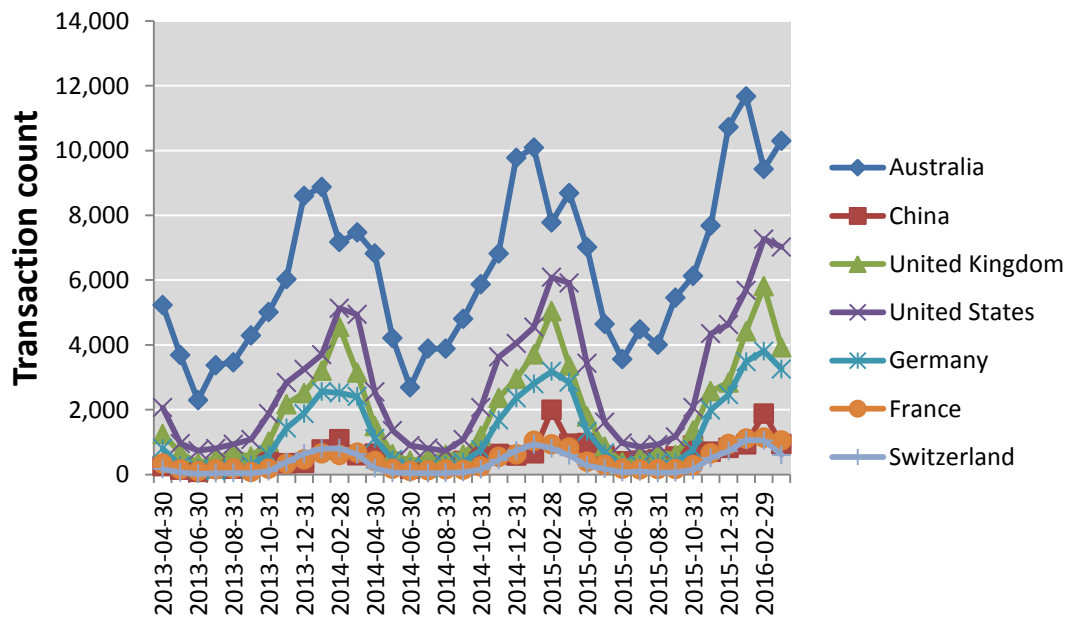




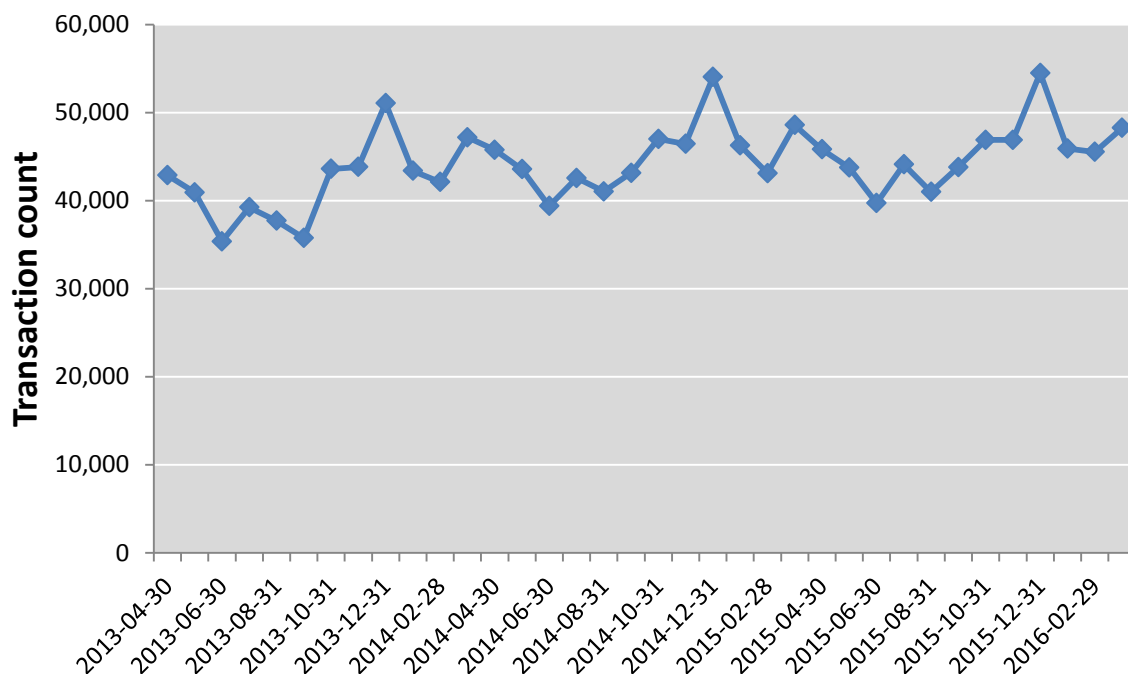
Fiordland RTO Domestic Visitation



Southland RTO International Visitation



### Southland RTO Domestic Visitation



## Aviation Poised To Drive Further Growth

Commenced 15/16		
Air New Zealand	Buenos Aires – Auckland Houston – Auckland	New service: 3pw 01DEC15 (777-200) New service: 5pw 15DEC15 (daily from DEC16) (777-200)
Air China	Beijing – Auckland	New service: 7 pw 10 DEC15 (A330-200)
China Eastern	Shanghai – Auckland	New service: 4pw 26SEP15 (daily DEC15-FEB16) (A330-200)
Philippine Airlines	Manila – Cairns – Auckland	New service: 4pw 03DEC15 (A320)
China Southern Airlines	Guangzhou – Christchurch	New service: 3pw 16DEC15 (787-8)
Emirates	Dubai-Auckland	New service: 5pw 01MAR16 (777-200LR)
Air Asia X	Kuala Lumpur – Gold Coast – Auckland	New service: 7pw 26MAR16 (A330-200)

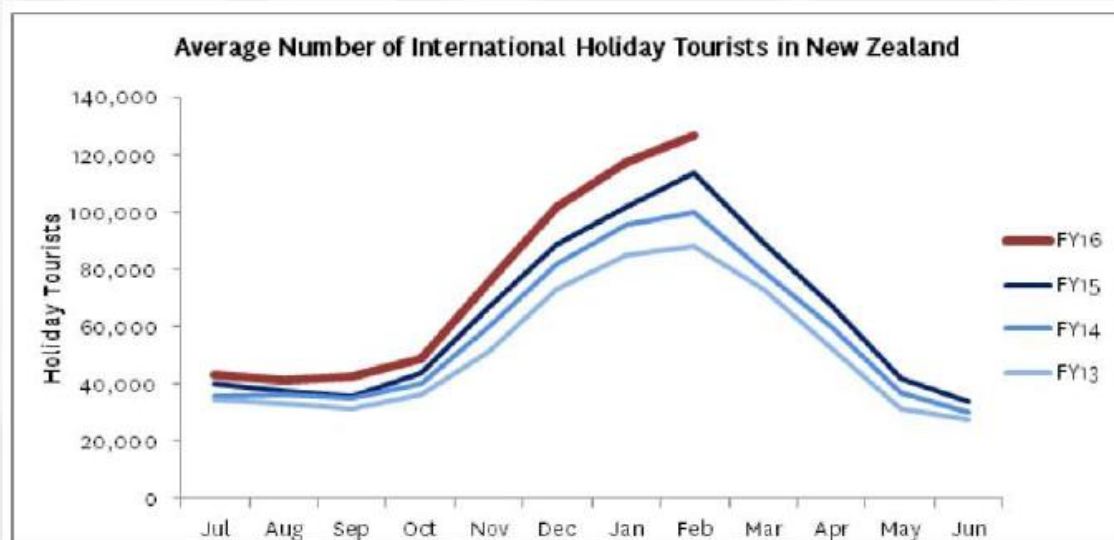
## Total international visitor arrivals trending up (Top 10 markets)

Country	Year ended Feb 2016	Compared to previous year
Australia	1,344,864	6.8%
China	368,256	27.9%
USA	247,920	9.4%
UK	211,248	7.8%
Japan	90,560	10.8%
Germany	89,072	11.5%
Korea	70,432	21.1%
Canada	54,106	9.4%
Singapore	50,320	6.4%
India	46,544	18.8%
All Countries	3,202,860	10.1%



40

## Seasonality more pronounced



Source: Statistics New Zealand – International Travel and Migration – YE Feb 16



## Trends

- December up 10.5%, January up 13.6%, February up 8.7%
- Growth slowed in February due to capacity constraints
- China strongly up (59.1% in Jan but down 5% in Feb due CNY) – continuing shift towards FIT but groups also up strongly. More South Island focus this summer/autumn.
- Developing markets up strongly YE: Indonesia 6.7%, Brazil 6.2%, Philippines 21.1%, Argentina 87.4%
- Shoulder season marketing paying off
- This summer has been BIG!
- Continuing pressure on accommodation, transport, activities – visitors booking ahead more.



41

### Recommendation

That the Policy Review Committee:

- a) Receives the report titled “Tourism Trends and Issues” dated 29 April 2016.

### Attachments

There are no attachments for this report.



## Draft Reserves Management Policy

Record No: R/16/3/4677

Author: Tamara Dytor, Policy Analyst

Approved by: Rex Capil, Group Manager Community and Futures

☒ Decision

☐ Recommendation

☐ Information

### Purpose

- 1 This report seeks approval from the Policy Review Committee to engage with the public on the draft Reserves Management Policy.

### Executive Summary

- 2 The attached draft Reserves Management Policy provides general guidance on the administration, use, maintenance and development of reserves across the Southland District. It is intended to prevent duplication of policy statements in each Reserve Management Plan.
- 3 This report presents the draft Reserves Management Policy which, with the approval of the Policy Review Committee, would be the subject of public engagement. Engagement would include targeted engagement with Community Boards and Community Development Area Subcommittees.

### Recommendation

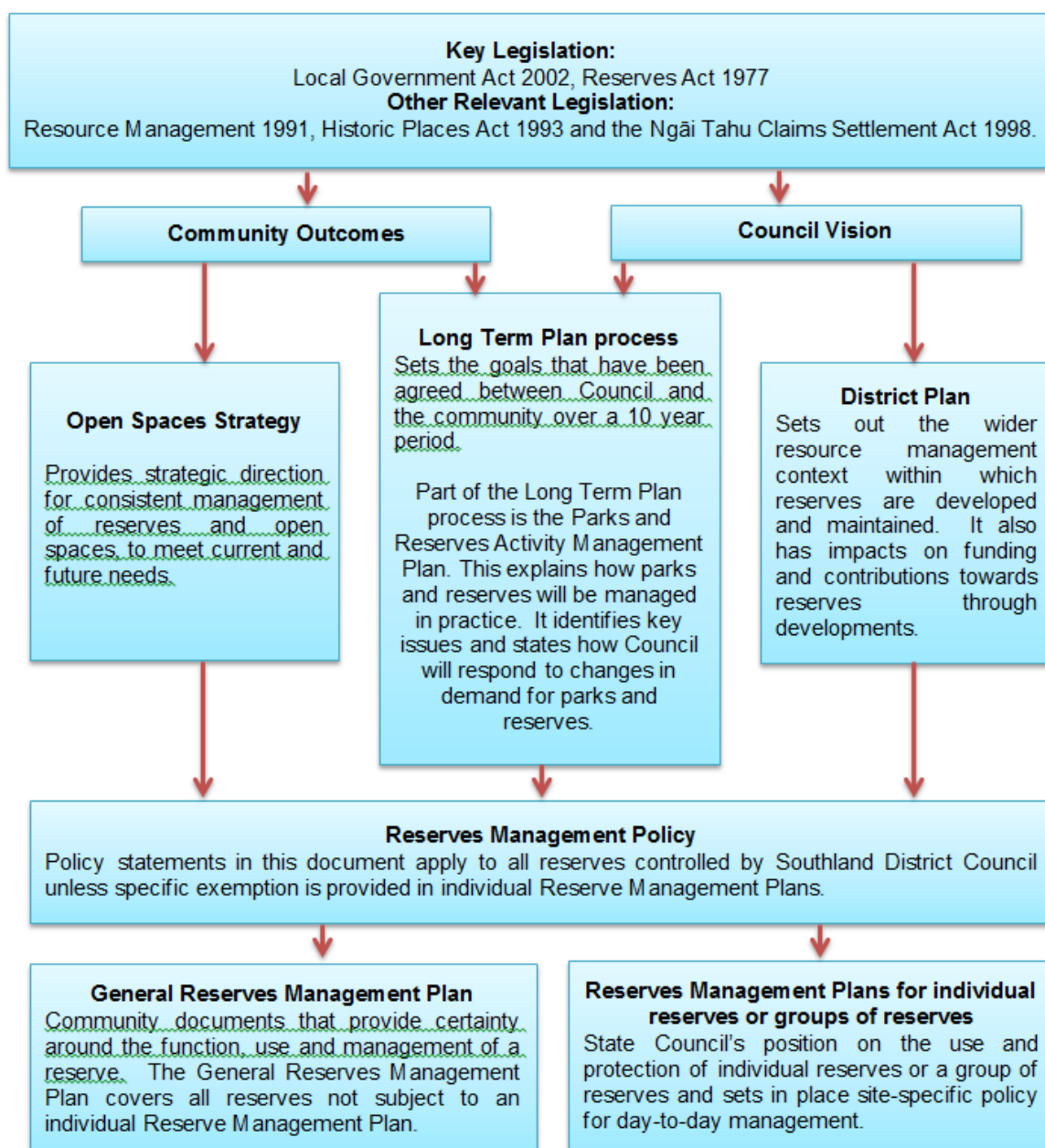
That the Policy Review Committee:

- a) Receives the report titled “Draft Reserves Management Policy” dated 9 May 2016.
- b) Determines that this matter or decision be recognised as not significant in terms of Section 76 of the Local Government Act 2002.
- c) Determines that it has complied with the decision-making provisions of the Local Government Act 2002 to the extent necessary in relation to this decision; and in accordance with Section 79 of the Act determines that it does not require further information, further assessment of options or further analysis of costs and benefits or advantages and disadvantages prior to making a decision on this matter.
- d) Endorses the draft Reserves Management Policy for public consultation and engagement.

## Content

### Background

Southland District has 155 reserves, parks and open spaces, distributed over a land area of 30,400.94 km<sup>2</sup>. Despite the diversity of reserves, the draft Reserves Management Policy provides a broad policy framework which would apply to all reserves, parks and open spaces, unless specifically stated in the relevant Reserve Management Plan. Reserve Management Plans provide direction for the day-to-day management of reserves and details about factors that impact upon reserves. They also establish clear directions for future management and development. Reserve Management Plans are a requirement of Section 41 of the Reserves Management Act 1977. The draft Reserves Management Policy prevents the need for duplication of policy statements in each Reserves Management Plan and would allow for reviews of Reserves Management Plans to be progressed.





### **Issues**

- 4 The issue central to this report is whether the Policy Review Committee supports the development of a Reserves Management Policy and whether the draft policy is appropriate for public engagement and consultation.

### **Factors to Consider**

#### **Legal and Statutory Requirements**

- 5 Southland District's parks, reserves and open spaces are governed and regulated by a broad range of legislation, plans, policies and bylaws. The Reserves Act 1977 applies to land that is gazetted as a reserve under the Act.
- 6 The draft Reserves Management Policy applies to all parks, reserves and open spaces controlled by Southland District Council regardless of whether they are classified as a reserve under the Reserves Act 1977. However, some specific exemptions may be provided in individual Reserve Management Plans.
- 7 Under Section 41 of the Reserves Act 1977, the Council is required to keep Reserve Management Plans under continuous review. Since Reserve Management Plans are aligned to the General Reserves Management Policy, this policy will also be kept under continuous review.
- 8 As well as aligning with other Southland District Council Plans and Policies, the draft General Reserves Management Policy also adheres to Environment Southland's Regional Plan and Ngāi Tahu ki Murihiku's Natural Resource and Environmental Iwi Management Plan 2008 - e Tangi a Tauria - The Cry of the People.
- 9 The draft policy makes reference to a number of existing Southland District Council bylaws. This ensures that the policy does not duplicate or contradict content in existing regulatory instruments.

#### **Community Views**

- 10 It is proposed that the draft Reserves Management Policy is released for consultation under section 82 of the Local Government Act 2002, as it is not assessed as significant.
- 11 The consultation process would include notification to Community Boards and Community Development Area Subcommittee chairs due to the role of Community Boards and Community Development Area Subcommittees in the governance and management of some reserves. Iwi through Te Ao Marama will also be notified about the proposed policy.

#### **Costs and Funding**

- 12 Costs associated with the draft policy would be limited to advertising costs for consultation.
- 13 There are no funding issues associated with the implementation of the draft Reserves Management Policy since the policy does not propose any significant changes in the practice of reserve management. However, it does consolidate statements about reserve management to prevent duplication of statements in Reserve Management Plans.

## Policy Implications

- 14 The draft Reserve Management Policy would enable the review of Reserve Management Plans by providing a general policy framework which would not need to be duplicated in each document.
- 15 The draft Reserve Management Policy provides practical detail to support the Southland District Council Open Spaces Strategy.

## Analysis

### Options Considered

- 16 The Policy Review Committee could choose to:
- Option 1: Endorse the draft Reserve Management Policy for release for public consultation and engagement.
  - Option 2: Not endorse the draft Reserve Management Policy for release for public consultation and engagement.

### Analysis of Options

#### Option 1 – Endorse the draft Reserve Management Policy for release for public consultation and engagement.

<i>Advantages</i>	<i>Disadvantages</i>
<ul style="list-style-type: none"> <li>• Allows for community input on the draft policy.</li> <li>• Provides a broad framework for future review of Reserve Management Plans.</li> <li>• Proposes approaches to a broad range of issues on parks and reserves.</li> </ul>	<ul style="list-style-type: none"> <li>• No disadvantages have been identified.</li> </ul>

#### Option 2 – Not endorse the draft Reserve Management Policy for release for public consultation and engagement.

<i>Advantages</i>	<i>Disadvantages</i>
<ul style="list-style-type: none"> <li>• No advantages have been identified.</li> </ul>	<ul style="list-style-type: none"> <li>• Does not allow for community engagement on the draft policy.</li> <li>• Does not support Council officers in conducting future reviews of Reserve Management Plans.</li> </ul>

### Assessment of Significance

- 17 The draft Reserves Management Policy has not been assessed as significant. It does not propose substantial changes to the way in which Council would approach reserve management, nor does it impose significant restrictions on reserve users. The policy does however, clarify a proposed position on a number of issues and refer to a number of existing bylaws.

### Recommended Option

- 18 It is recommended that the Policy Review Committee endorse the draft Reserves Management Policy for public consultation and engagement (Option 1).

### Next Steps

- 19 If the Policy Review Committee endorses the draft policy for public consultation, it would be made available to the public for submissions. Community Board and Community Development Subcommittee chairs would be notified of the submission period.

### Attachments

- A Draft Reserves Management Policy [View](#)

## SOUTHLAND DISTRICT COUNCIL RESERVES MANAGEMENT POLICY

### DOCUMENT CONTROL

<b>Policy Administrator:</b> Strategic Manager Property	<b>TRIM reference number:</b>	<b>Effective date:</b>
<b>Approved by:</b> Council	<b>Date approved:</b>	<b>Next review date:</b>

### Contents

<b>1.0</b>	<b>PURPOSE</b>	<b>1</b>
<b>2.0</b>	<b>SCOPE</b>	<b>1</b>
<b>3.0</b>	<b>DEFINITIONS</b>	<b>1</b>
<b>4.0</b>	<b>BACKGROUND</b>	<b>1</b>
4.1	The Reserves Act	3
4.2	Local Context	3
<b>5.0</b>	<b>POLICY STATEMENTS</b>	<b>3</b>
5.1	Council Approval	3
5.2	General Access	3
5.3	Pedestrian Access	3
5.4	Vehicle Access	4
5.5	Leases and Licences to Occupy	4
5.6	Animals	4
5.7	Aircraft and Helicopter Landings	4
5.8	Sale and Consumption of Alcohol	4
5.9	Trading	5
5.10	Fires	5
5.11	Fireworks Displays	5
5.12	Buildings and Structures	5
5.13	Boundaries and Fencing	6
5.14	Toilets	6
5.15	Play Equipment	6
5.16	Signs and Interpretation	6
5.17	Pest Plant and Pest Animal Control	6
5.18	Litter Control and Dumping	6
5.19	Landscaping, Amenity Planting and Areas of Native Vegetation	7
5.20	Memorials	7
5.21	Monuments, Artwork and Sculptures	7

5.22	Outdoor Furniture.....	7
5.23	Network Utility Infrastructure .....	7
5.24	Lighting .....	7
<b>6.0</b>	<b>ROLES AND RESPONSIBILITIES .....</b>	<b>8</b>
<b>7.0</b>	<b>ASSOCIATED DOCUMENTS .....</b>	<b>8</b>
<b>8.0</b>	<b>REFERENCES.....</b>	<b>9</b>
<b>9.0</b>	<b>REVISION RECORD.....</b>	<b>9</b>

**1.0 PURPOSE**

This policy provides guidance on the administration, use, maintenance and development of reserves across the Southland District.

**2.0 SCOPE**

Policy statements in this document apply to all parks, reserves and open spaces controlled by Southland District Council unless specific exemption is provided in individual Reserve Management Plans.

**3.0 DEFINITIONS**

Term	Meaning
<b>Activity Management Plan (AMP)</b>	The Parks and Reserves Activity Management Plan is used to document Council's management practices for parks and reserves over a 30 year period.
<b>Council/the Council</b>	Southland District Council as the land owner/administering body of reserves.
<b>Long Term Plan (LTP)</b>	Southland District Council's Long Term Plan. It is also referred to as the 10 Year Plan.
<b>Parks, Reserves and Open Spaces</b>	The term reserve refers to any parcel of land owned, administered and/or managed by Council, as a reserve, park, or open space.
<b>Reserve Management Plan</b>	Reserve Management Plans are a requirement of Section 41 of the Reserves Management Act 1977. Reserve Management Plans provide direction for the day-to-day management of reserves and details about factors that impact upon reserves. They also establish clear directions for future management and development.
<b>Unmanned Aerial Vehicles/ UAVs</b>	The term Unmanned Aerial Vehicle (UAV) is defined in the Southland District Council Unmanned Aerial Vehicles Policy. The term UAV covers all electric powered remote controlled model aircraft, including the type commonly referred to as 'drones' that are capable of vertical take-off and landing and small hand-launched gliders with less than a 1.5 metre wing span.

**4.0 BACKGROUND**

Southland District has 155 reserves, parks and open spaces, distributed over a land area of 30,400.94 km<sup>2</sup>. Southland District's reserves offer an extensive range of recreational opportunities and environmental characteristics.

Reserves owned, administered and/or managed by the Council have two distinct forms of legal status:

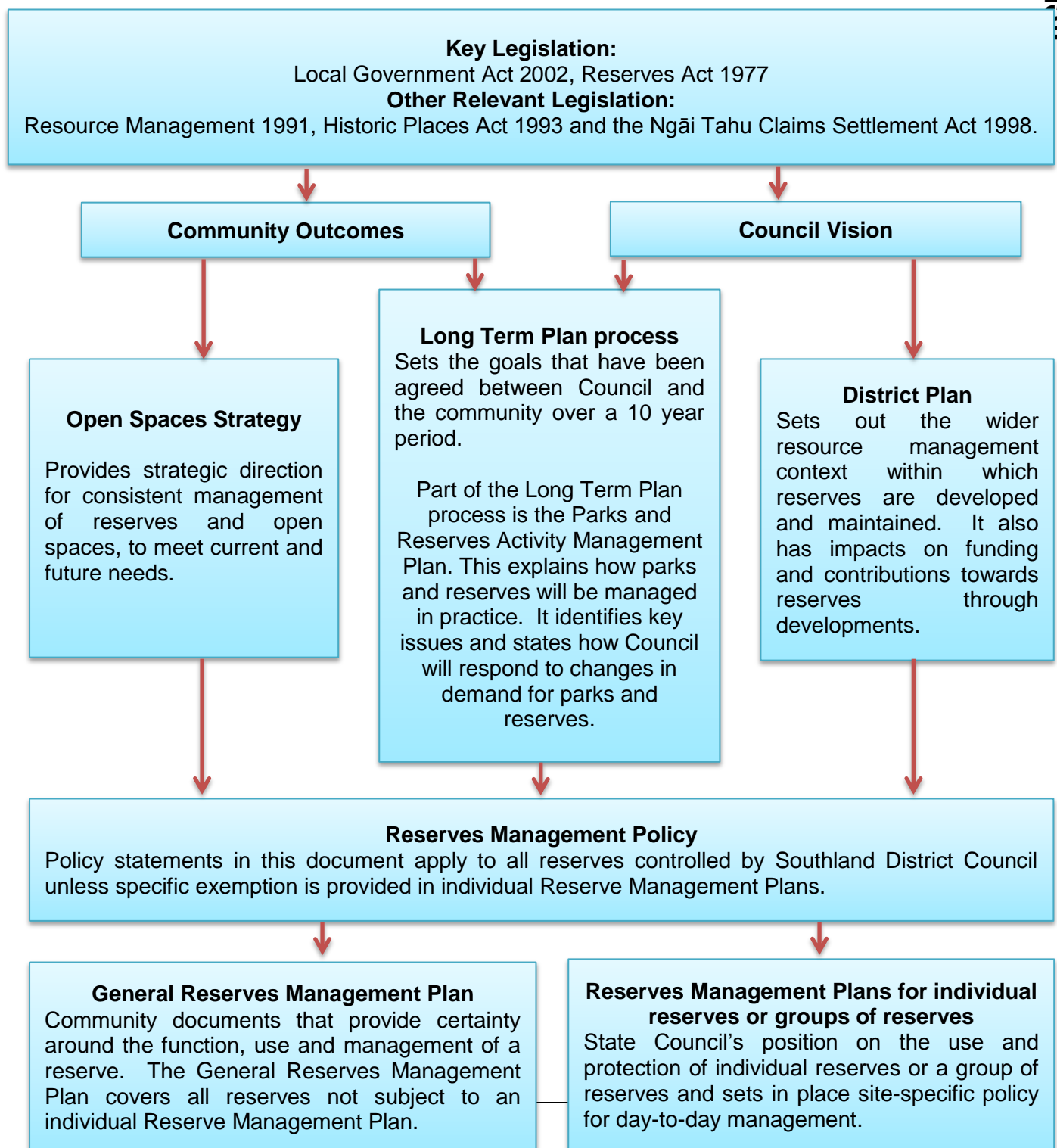
- land held subject to the Reserves Act 1977, and classified according to its principal purpose

- freehold land held by Council in fee simple title for parks purposes but not held under the Reserves Act.

The Reserves Act 1977 applies to all public land that has been vested or gazetted under the Act and specifies in general terms the purpose of each class of reserve. The Act also requires that each reserve be managed in accordance with its purpose and classification.

The terms parks, reserves and open spaces could also refer to parcels of land held by the Council for a wide variety of purposes akin to those described in the Reserves Act or the Local Government Act 2002. Not all of these parcels of land are protected under these Acts.

Southland District's parks, reserves and open spaces are governed and regulated by a broad range of legislation, plans, policies and bylaws.





#### 4.1 The Reserves Act

The Reserves Act 1977 applies to land that is gazetted as a reserve under the Act. While the term park(s) is used in this document, not all parks are reserves under the Reserves Act 1977. The management of these parks, however, will not differ in general terms from reserves as defined by the Reserves Act 1977.

Under Section 41 of the Reserves Act 1977, the Council is required to keep Reserve Management Plans under continuous review. Since Reserve Management Plans are aligned to the General Reserves Management Policy, this policy will also be kept under continuous review.

#### 4.2 Local Context

As well as aligning with other Southland District Council Plans and Policies, the General Reserves Management Policy also adheres to Environment Southland's Regional Plan and Ngāi Tahu ki Murihiku's Natural Resource and Environmental Iwi Management Plan 2008 - e Tangi a Tauria - The Cry of the People.

### 5.0 POLICY STATEMENTS

#### 5.1 Council Approval

Some activities outlined in this policy require specific approval or authorisation from the Council. The nature and context of the activity will determine how approval may be granted. For further information on how to obtain approval for specific activities, please contact Southland District Council.

#### 5.2 General Access

Unless it is limited by the Reserves Act 1977, public access to reserves is a right. The Council provides a level and standard of access to reserves that is appropriate to how each reserve is used.

Several factors may impact on public access to reserves. These include:

- leases or licences to occupy the reserve held by third parties
- safety issues
  - activities that are occurring on a reserve for a period of time (eg planting or construction) or
- other restrictions under the Reserves Act 1977.

Clubs and organisations may gain exclusive use of a reserve for a specific period of time (eg during organised sports teams training or match occasions) with prior written approval from the Council.

From time to time, reserves may be closed to the public and a rental charged for the entry by an organisation staging a special event. This is subject to Section 53(1)(e) of the Reserves Act 1977 and requires the written approval of the Council.

#### 5.3 Pedestrian Access

If required, pedestrian access will be controlled by the provision of walking tracks, footpaths and footbridges.

Where practical, access to reserves and reserve facilities will be inclusive and will consider universal design. Walking tracks will be maintained to the appropriate standard developed by the Department of Conservation and Standards New Zealand as set out in the "New Zealand Handbook - Tracks and Outdoor Visitor Structures (SNZ HB 8630:2004)".

#### **5.4 Vehicle Access**

Council may provide access roads and parking facilities within reserves. Motorised vehicles, other than maintenance vehicles, must only be used on roadways or parking areas unless prior written approval from the Council has been obtained.

Use of non-motorised vehicles (such as bicycles, skateboards and roller-blades) is permitted provided their use does not endanger other reserve users, cause damage to the reserve or make undue noise.

Non-motorised vehicles should not be used on walking tracks unless there is a sign indicating that their use is permitted.

#### **5.5 Leases and Licences to Occupy**

The Council may enter into formal lease agreements on reserve land when the land is available and there is a clear requirement for consistent use or service. Management responsibilities of the lessee will be clearly identified in the lease agreement.

#### **5.6 Animals**

Dog access to parks and reserves is determined by Southland District Council's Dog Control Bylaw 2015. The bylaw also determines what degree of control is required on reserves where dogs are allowed.

Signage or information in the Reserve Management Plans will indicate if other animals are specifically excluded on any reserve.

Council may use grazing as a management tool on reserves. Grazing will comply with the Southland District Council Rooding Bylaw and the Southland District Council Keeping of Animals, Poultry and Bees Bylaw.

#### **5.7 Aircraft and Helicopter Landings**

Landing an aeroplane, helicopter or any kind of flying machine in a Council reserve is not permitted without prior written approval from the Council.

Emergencies are an exception to this rule. Parties wishing to use any reserve for the purpose of landings during special events or for approved training exercises should contact Southland District Council for further advice.

#### **5.8 Sale and Consumption of Alcohol**

Consumption of alcohol in public spaces is regulated by legislation and the Alcohol Control Bylaw. The sale and supply of alcohol is regulated by the Sale and Supply of Alcohol Act 2012. Council permits special licences to be issued for the sale and supply of alcohol on reserves. Club licences may be issued to lease holders within reserves.

## 5.9 Trading

Trading in reserves must comply with Section 54 (1) (d) of the Reserves Act 1977 and may be subject to the Trading in Public Places Bylaw.

Section 54 (1) (d) of the Reserves Management Act 1977 allows trading to occur under leases and licences or for a temporary occupation of not more than six consecutive days. Trading activities must be necessary to enable the public to obtain the benefit and enjoyment of the reserve or for the convenience of persons using the reserve.

Applications to trade in reserves for a period of not more than six consecutive days will be administered under the Trading in Public Places Bylaw. Applications to trade in reserves for a longer time period will require a lease or licence. If trading is contemplated under the relevant Reserve Management Plan, applications will not be publicly notified. If trading is not contemplated under the relevant Reserve Management Plan, applications will be publicly notified and an opportunity for objections will be provided.

When making decisions regarding applications to trade on reserves, Council will consider a number of factors including the nature of trading, its impact on other reserve users and the effect on the reserve and existing infrastructure and facilities.

## 5.10 Fires

Lighting fires outside of a contained barbecue is not permitted on reserves unless there is prior written approval from the Council and the Southern Rural Fire Authority.

## 5.11 Fireworks Displays

Fireworks displays must:

- be approved by the local community board, community development area subcommittee or Council
- be undertaken only by people authorised by Council
- have a safety plan (including fire control) that has been approved by the Council
- have any approvals required under the Hazardous Substances and New Organisms Act
- have a fire permit issued by the Southern Rural Fire Authority if the display is during a Restricted Fire Season.

## 5.12 Buildings and Structures

The number of buildings and structures on reserves will be limited to a level that facilitates the safe and appropriate use of each reserve. Sharing facilities by more than one club or group is encouraged.

All new buildings or major changes to existing buildings and structures on reserves require approval from Council as the land owner of the reserve. Council will consider how buildings and structures will integrate with the natural environment of the reserve. The Building Act 2004 and the Southland District Plan may also include other requirements which must be met.

Buildings and structures will be maintained to a high standard and, where practical, designed to limit the opportunity for vandalism.

### 5.13 Boundaries and Fencing

The Council will reach an agreement with adjoining land owners on the type and standard of fencing and the contributions made by each party. On occasion, fencing may not be required. Required contributions may be financial or made through the provision of materials or labour.

There may be some situations where Council is not required to contribute to a boundary fence, for example if there is an existing fencing covenant.

Consideration will be given to the needs of the Council and the adjoining land owner. The characteristics of the reserve and the land use of adjoining neighbours will also influence Council's decisions in relating to fencing. Decisions relating to fencing will be formalised through a fencing agreement.

Where it is impractical or undesirable to erect a fence on a reserve boundary, the fence may deviate from the legal boundary with the agreement of the adjoining land owner.

### 5.14 Toilets

A district-wide approach is taken to the number, location and standard of public toilets. Proposals for new toilets are considered against criteria which take into consideration requirements and availability across the District.

### 5.15 Play Equipment

All new playgrounds and replacement of playground equipment will comply with the Building Act 1991, the Resource Management Act 1991 and the New Zealand Safety Standards NZS 5828:2004 or subsequent updates.

The design and location of each playground will reflect the visual character of the reserve and consider environmental factors such as the orientation of the sun, shelter from the wind, visibility and disturbance to adjoining properties.

### 5.16 Signs and Interpretation

The placement of signs on reserves by non-Council organisations requires written approval from Council. Advertising signs are subject to the Southland District Plan.

Council will ensure that new or replacement signage identifies places that are of cultural significance in accordance with the Ngāi Tahu Claims Settlement Act 1998.

### 5.17 Pest Plant and Pest Animal Control

Pest plants and animals on Council reserves will be controlled in accordance with Environment Southland's Regional Pest Management Strategy.

### 5.18 Litter Control and Dumping

Litter bins may be provided on reserves at strategic locations and in sufficient numbers to meet the reasonable demands of the users. These bins will be cleared regularly to prevent overfill and spillage.

Where there are no litter bins, reserve users are required to remove all litter from the reserve. The dumping of refuse including garden waste on reserves is an offence under the Litter Act 1979.

### **5.19 Landscaping, Amenity Planting and Areas of Native Vegetation**

Landscaping and amenity planting will be undertaken on reserves in accordance with Reserves Management Plans.

Any new plantings on a reserve will consider visibility and safety. The retention of indigenous vegetation and threatened plants on reserves is a priority for the Council. Where possible, existing native vegetation on reserves shall be preserved and revegetated using locally sourced native species. The use of exotic species will be restricted to areas where exotic species predominate and/or the recreational use of the reserve would be enhanced by the use of exotics (eg for shade).

The removal or damage to any tree, shrub or plant material from within reserves is prohibited without the prior written approval of the Council.

### **5.20 Memorials**

Memorials and plaques for individuals are only permitted in locations identified in Reserve Management Plans. All memorial plantings and commemorative plaques require written approval from the Council.

### **5.21 Monuments, Artwork and Sculptures**

Monuments, art work and sculptures must have relevance to the reserve and enhance the natural surroundings. When determining whether the placement of a monument, artwork or sculpture is appropriate, the nature of the item, the proposed location, reserve use and reserve values will be considered.

Maintenance of monuments, artworks and sculptures will be undertaken by Council staff, or contractors, unless agreed otherwise at time of construction.

### **5.22 Outdoor Furniture**

Outdoor furniture will be appropriate to the needs of reserve users. The nature of outdoor furniture, including materials and colour will be consistent with the natural surroundings. All outdoor furniture will be approved by the Council.

Maintenance of outdoor furniture will be undertaken by the Council staff or contractors.

### **5.23 Network Utility Infrastructure**

Reserves are often crossed by network utility infrastructure, particularly power pylons. While most of these have been in place for many years, the Council will only consider new requests to place utility infrastructure in a reserve if all alternative options have been considered.

### **5.24 Lighting**

Lighting may be provided for walkways and parking areas in reserves. Impacts on adjoining land owners are considered in relation to ground lighting or lighting outside buildings.

Where there are sports grounds in a reserve, lighting for night time training may be considered. Controls on lighting usage may be imposed by the Council.

## 6.0 **ROLES AND RESPONSIBILITIES**

Reserve users are responsible for ensuring that their use, activity, or any associated buildings or structures comply with relevant legislation, the Southland District Plan, Southland District Council Policies and Council Bylaws.

Some other documents which regulate activity on reserves are provided in the table below.

Activity	Regulated by
Camping	Freedom Camping Bylaw
Consumption of alcohol in public places	Alcohol Control Bylaw and Summary Offences
Sale and supply of alcohol	Sale and supply of Alcohol Act 2012
Dogs	Dog Control Bylaw and Dog Control Act 1996
Other animals	Keeping of Animals, Poultry and Bees Bylaw
Trading	Trading in Public Places Bylaw
Unmanned aerial vehicles	Unmanned Aerial Vehicle Policy

## 7.0 **ASSOCIATED DOCUMENTS**

This document should be considered in the context of the following associated documents:

### Bylaws:

- Southland District Council Dog Control Bylaw
- Southland District Council Keeping of Animals, Poultry and Bees Bylaw
- Southland District Council Alcohol Control Bylaw
- Southland District Council Trading in Public Places Bylaw
- Southland District Council Animal Management Bylaw
- Southland District Council Freedom Camping Bylaw
- Southland District Council Roding Bylaw

### Plans:

- Reserve Management Plans
- Southland District Plan
- Southland District Council Long Term Plan
- Parks and Reserves Activity Management Plan
- Southland District Council Animal Management Bylaw

### Strategy:

- Southland District Council Open Spaces Strategy

Policies:

- Southland District Council Unmanned Aerial Vehicles Policy
- Southland District Council Smoke Free Open Spaces Policy

Acts:

- Reserves Act 1977
- Resource Management Act 1991
- Local Government Act 2002
- Sale and Supply of Alcohol Act 2012
- Building Act 2004
- Health Act 1956
- Fencing Act 1978

**8.0 REFERENCES**

- New Zealand Handbook - Tracks and Outdoor Visitor Structures (SNZ HB 8630:2004)
- New Zealand Safety Standards NZS 5828:2004

**9.0 REVISION RECORD**

Date	Version	Revision Description
«Type Date»	«Version»	«Revision»
«Type Date»	«Version»	«Revision»
«Type Date»	«Version»	«Revision»



## Community Futures Project update

**Record No:** R/16/4/6192  
**Author:** Tamara Dytor, Policy Analyst  
**Approved by:** Rex Capil, Group Manager Community and Futures

☐ Decision ☐ Recommendation ☒ Information

### Background

- 1 The Community Futures Project is currently focused on the implications of projected demographic change for Ohai and Nightcaps. Both Ohai and Nightcaps are likely to decline in population over the next 30 years. The Community Futures Project aims to inform Council in preparation for the development of the Long Term Plan 2017-28.
- 2 Demographic change has implications across a range of Council activities. Changes in demographics will impact on the demand for services, township resilience, rates affordability and funding equity.
- 3 Following workshops for elected members and staff in 2015, a forum for community stakeholders was held in the Southland District Council Otautau office on 24 February 2016. A further forum for all residents was held in the Nightcaps Community Hall 10 March 2016.

### Engagement Sessions

- 4 Both sessions were well attended and were effective in gaining community feedback. Around eight community stakeholders attended the meeting held in the Southland District Council Otautau office. Around 75 residents and ratepayers attended the broader session held in the Nightcaps Community Hall. Following the engagement sessions, some written feedback was also received.
- 5 Sessions were structured to communicate the key information from demographers Dr Natalie Jackson and Rachel MacMillan, in context of other information available to Council. They were also intended to gather community feedback and stimulate discussions.

### Community Views and Discussion

#### Overview

- 6 The clearest message from the community engagement sessions was that the people who live in Ohai and Nightcaps do so because they want to be there.
- 7 Interconnectedness, a peaceful environment and scenic landscape were cited as some of the key strengths of these communities. Housing affordability was also discussed as another important benefit. Some people also used examples to demonstrate that it is possible to work remotely from within these townships.
- 8 During discussions, it became clear that there are two distinct but interlinked areas of focus. The first is appropriately planning for infrastructure and services in the medium to long term. The second is community aspirations, development and resilience.
- 9 In discussing the three broad options around planning for demographic change (1. Do nothing, 2. Intervene to promote growth, 3. Plan for the predicted change), a variety of views were put forward.

Item 7.5

- 10 There was significant support for making services and infrastructure fit for purpose to meet community needs. It was recognised that sustainable and affordable services are critical to ongoing community resilience. However, some of those who attended also discussed possibilities for promoting population growth. Suggestions for promoting population growth included encouraging seasonal workers to reside in Ohai and Nightcaps and providing opportunities for climate change refugees in these townships.

Comments on Infrastructure Planning and Scheduled Expenditure

- 11 The community engagement sessions focussed on how Council should plan in light of information about demographic change. Infrastructure maintenance and renewals are at the heart of this issue.
- 12 Scheduled expenditure for water and wastewater in the 30 Year Infrastructure Strategy is around \$10,904,723 (Ohai, Nightcaps and Wairio water and wastewater). Ohai and Nightcaps also have a number of community assets which could be considered to be duplicated, for example halls and bowling clubs as well as public venues in the marae and other facilities.
- 13 Overall, community members valued their existing services and infrastructure. However, there was support for maintaining infrastructure that is appropriate and fit for purpose. Attendees acknowledged that planning infrastructure appropriate for the population size is necessary to maintain rates affordability and ensure communities remain sustainable
- 14 However, residents also want value for their rates contributions and there was some confusion about how much of the scheduled expenditure has already been collected through past rates. Broadly, the issue of loan funding was discussed. Some ratepayers believed that the scheduled expenditure for water and wastewater renewals had already been rated in full and that if an alternative programme was undertaken the rated amount would be used for other activities.
- 15 This belief is incorrect. Although some work is funded in the year that is completed; a vast majority funded through loans. When loan funding is used, loans are taken in the year that works are completed. Loans are then repaid over a period of time (usually a 25-30 year period).
- 16 Further, with the implementation of district funding, communities are no longer contributing solely to the renewal and replacement of water and wastewater infrastructure which services their townships. During the sessions, it was clarified that district funding is a political decision about rating, and that this is not always guaranteed as a permanent rating approach in future.
- 17 Some attendees also queried the amount of scheduled expenditure for water and wastewater from 2015 – 2045, stating that lower amounts were previously agreed. The tables below provide a breakdown of the scheduled expenditure. These figures form part of the 30 Year Infrastructure Strategy, a document which was not produced prior to the Long Term Plan 2015-25. It is possible that attendees are considering previous documents, which would have detailed expenditure for only a ten year period.
- 18 Officers have also noted that deferral of works to a later date may have given the impression of lower scheduled expenditure. However, the amount of work and nature of work has not changed. It is of note that although deferrals offer flexibility to respond to actual infrastructure needs, deferrals do not always equate to reduction in expenditure in the long terms.

OHAI, NIGHTCAPS AND WAIRIO WATER SUPPLY AND WASTEWATER, 2015 – 2045

NIGHTCAPS							
	2015-19	2020-24	2025-29	2030-34	2035-39	2040-44	Total
<b>Water Supply</b>							
Renewal		198,604		804,236	150,963	21,790	1,175,593
LOS							
<b>Wastewater</b>							
Renewal		85,446	8,763	21,271	370,578	86,470	572,528
LOS			2,000,000				2,000,000
<b>Storm Water</b>							
Renewal				82,598	167,486	337,739	587,823
LOS							
<b>Total</b>							<b>4,335,944</b>

OHAI							
	2015-19	2020-24	2025-29	2030-34	2035-39	2040-44	Total
<b>Water Supply</b>							
Renewal	6,036	1,276,045	38,951	818,341	54,932	105,507	2,299,812
LOS	93,500	20,000					113,500
<b>Wastewater</b>							
Renewal	27,526		1,906,313	1,173,033	17,526	5,216	3,129,614
LOS	60,000						60,000
<b>Storm Water</b>							
Renewal			675,507	89,998	200,348		965,853
LOS							
<b>Total</b>							<b>6,568,779</b>

- 19 During future engagement and planning, further information about these issues may be required by community members.

Comments on Housing Affordability

- 20 There was also some discussion about house prices in Ohai and Nightcaps. Some community members saw this as a way to attract new residents to the area.
- 21 However, it was also stated that some people have found it difficult to obtain loans as a result of low values in this area. Other indicators such as low median income and few employment opportunities may also place limitations around opportunities presented by affordable housing. In addition, rates affordability may be a consideration which people will factor into home ownership in these communities.
- 22 In addition, housing affordability in Ohai and Nightcaps may also be a future challenge because it may create a barrier to entering more expensive markets in other locations.
- 23 There are also some issues to be considered around options for providing accommodation for dairy workers in these communities. As well as the impacts of currently low dairy prices, there may also be a preference for farmers to maintain worker accommodation on their

existing properties. This would allow farmers to add value to their properties while benefiting from accommodation charges.

Suggestions to promote population growth

- 24 Some community members raised the issue of the inability for seasonal workers to obtain a benefit in Ohai and Nightcaps. One attendee stated that this has also been the case in Tuatapere but that the Community Board had had approach changed by Work and Income New Zealand (WINZ). Contact has been made with WINZ and with stakeholders in Tuatapere. From conversations with stakeholders in Tuatapere, it does not appear that the Tuatapere Community Board was involved in changing any WINZ approach. Information from WINZ regarding this issue is pending.

- 25 It is important to note that while encouraging seasonal workers may limit population decline in these communities, other issues (e.g. providing economic opportunity) may not be improved by this strategy.

**Migrants and refugees**

- 26 Written feedback in response to engagement sessions suggested that there may be an opportunity to encourage refugees and new migrants to reside in Ohai and Nightcaps. While this idea may have merit, a number of challenges need to be recognised. In 2015, New Zealand accepted only 750 refugees per year and this is not projected to rise significantly in the near future.
- 27 It has been noted that the majority of new migrants prefer to reside in urban centres, primarily Auckland. This is because of the availability of the types of work and opportunities they seek, the concentration of their co-ethnics and because it is New Zealand's only sizeable city.
- 28 The effect of applying extra points for residing in regions is also dwindling for some migrants. In 2004, two out of three principal applicants claimed points for work offers in the regions, but that fell to 51 per cent in 2012. China is New Zealand's biggest long term provider of new migrants and in 2014, seven out of 10 principal applicants from the UK claimed points for employment outside Auckland, while it was the reverse for the Chinese with 68 per cent choosing Auckland.
- 29 The current number of refugees accepted by New Zealand on an annual basis is insufficient to sustain small rural townships. Like other migrants, proximity to economic and educational opportunities would also be a priority for refugees.
- 30 Ohai and Nightcaps would be competing with other areas across the Southland District, New Zealand and the world to attract new residents. There are limited economic and employment opportunities in Ohai and Nightcaps. The townships are poorly connected by public transport and to telecommunications services. To attract new residents, significant investment would be required and this would draw resources away from other areas where promoting population growth may be more sustainable.
- 31 Council would need to consider the number and types of new residents needed to grow the population. Although Council has not modelled how many residents would be required to successfully sustain the populations of Ohai and Nightcaps, a study on the European Union shows just how many people it takes to boost a population which has started to decline. At the beginning of 2000, the population of the European Union was 376 million. A study by the United Nations indicated that during the next 50 years it would take 47 million immigrants (12.5% of the population in 2000) to hold the population of the European Union constant, and 80 million (21.3% of the population in 2000) to sustain the workforce-aged population.

- 32 This example also demonstrates how in demand new migrants will be. Although demographic situations in developing countries are generally different to those in New Zealand, many more developed countries and areas within these countries will be competing for 'high quality human capital' (fertile, skilled, working age people). There are also challenges with wanting to attract international migrants due to policies and requirements at the central government level and the attractiveness of larger urban areas such as Auckland where there is more connectivity with other migrants and more economic opportunity

#### **Retirement Destinations**

- 33 Affordable housing seems to make Ohai and Nightcaps ideal as a retirement destination. However, bringing older residents would actually increase the pace of population ageing by driving up the median age, not adding new participants to the workforce and not regenerating the population naturally through new births.
- 34 Population ageing at an increased pace is unlikely to promote economic growth and ongoing inwards migration (ie new residents) would be needed to match death rates at older ages.

#### Quality of Life and Community Development

- 35 Quality of life initiatives and community development were also areas of focus during community engagement sessions. To ensure that quality of life initiatives contribute to long term goals, Council will first need to determine its broad approach to planning the future of these communities (1. Do nothing, 2. Intervene to promote growth, 3. Plan for the predicted change).
- 36 Attendees nominated a number of areas that could enhance the quality of life in Ohai and Nightcaps included:
- Better access to internet services;
  - Improved transportation services or access to services within these communities;
  - Ongoing economic and employment opportunities; and
  - The ability to manage vacant sections owned by absentee landlords.
- 37 In relation to opportunities for development, Council also received a range of suggestions including:
- Promoting farm stay tourism;
  - Leveraging off the proximity of the Te Araroa trail;
  - Promoting Ohai and Nightcaps as destinations for people to live and work remotely;
  - Developing the existing mine site into a manmade lake or BMX park;
  - Developing community gardens on abandoned or unused land; and
  - Promoting the areas as locations for film and television.

Comments on community funds

- 38 There was also some discussion of the structure and function of the Ohai Railway Fund. Some attendees believed that they were automatically entitled to money from this fund as 'shareholders'. In fact, the purpose of the fund is to provide grants and loans for the benefit of the residents of the former Ohai Railway Board Area - a resident being a person or a descendant of a person whose name appeared on the Parliamentary Electoral Roll in any year from 1960 to 1990 and whose address at the time was within the area of the former board.

**Next Steps**

- 39 The Community Futures Project is intended to inform elected members about some of the issues relating to demographic change. This is intended to help prepare Councillors for the development of the Long Term Plan 2018-28.
- 40 Officers will work to provide further information on the issues that have been raised through research and community feedback. Officers will work with the community and information will be reported back to the Policy Review Committee.
- 41 Infrastructure planning will be a key area of focus. Officers will provide further information on water and wastewater projects and funding and on the utilisation and maintenance of community facilities. Consideration will also be given to the parameters of funds such as the Ohai Railway Fund and potential funding available as part of mine site rehabilitation. Community concerns, priorities and aspirations will be an important part of the information provided to the Policy Review Committee.
- 42 As part of the Long Term Plan 2018-28 process, Council will need to determine its broad approach to demographic change in Ohai and Nightcaps (1. Do nothing, 2. Intervene to promote growth, 3. Plan for the predicted change).
- 43 Once an approach has been decided Council can undertake further work with the community to look at what strategies will be appropriate. At this stage, timeframes in which action should be taken will also be determined.
- 44 Demographic issues facing Ohai and Nightcaps are not unique. They are part of broader patterns throughout the country and throughout the world. When considering approaches for Ohai and Nightcaps, Council should be mindful of future consistency and whether the approach would be viable for other communities in the Southland District which may face similar issues.

**Recommendation**

**That the Policy Review Committee:**

- a) **Receives the report titled "Community Futures Project update" dated 6 May 2016.**

**Attachments**

There are no attachments for this report.